

SNELLERS

ESTATE AGENTS



Wills Crescent, TW3

£675,000

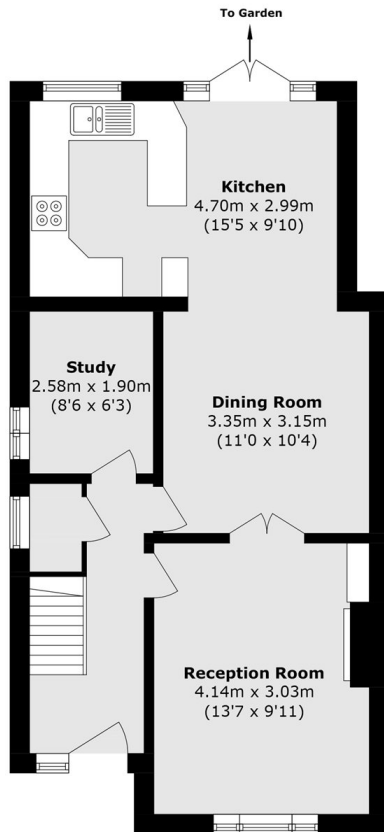
This 1930's semi-detached family home boasts all you need and will be very popular for families looking for ample space; The property could benefit from modernising and offers four bedrooms, two reception rooms, kitchen, utility room, a large South facing Garden, off-street parking and a garage.

Wills Crescent is half mile from Murray Park and Hounslow Station. Nelson Primary School, St Edmunds Primary school and Whitton Station and high street are all also less than a mile's walk.

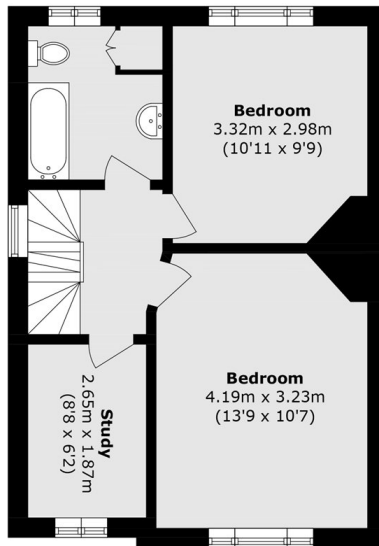
- Quiet Location • Four Bedrooms • Sunny Garden •
- Garage & OSP • Off Street Parking • Semi Detached •

SNELLERS

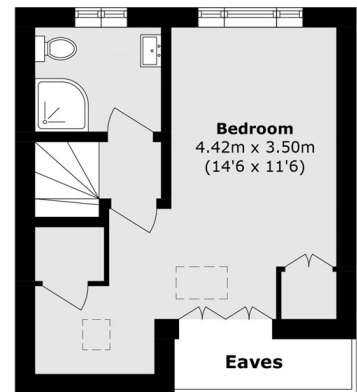
ESTATE AGENTS



Ground Floor



First Floor



Second Floor

Total area (approx.): 114.7 sq. m (1234.6 sq. ft)
(Excluding Eaves)

Snellers Twickenham Sales
64-66 Heath Road
Twickenham
TW1 4BX
020 8892 5555
twickenhamsales@snellers.co.uk

Energy Rating: D We aim to make our particulars both accurate and reliable. However they are not guaranteed; nor do they form part of an offer or contract. If you require clarification on any points then please contact us, especially if you're traveling some distance to view. Please note that appliances and heating systems have not been tested and therefore no warranties can be given as to their good working order