



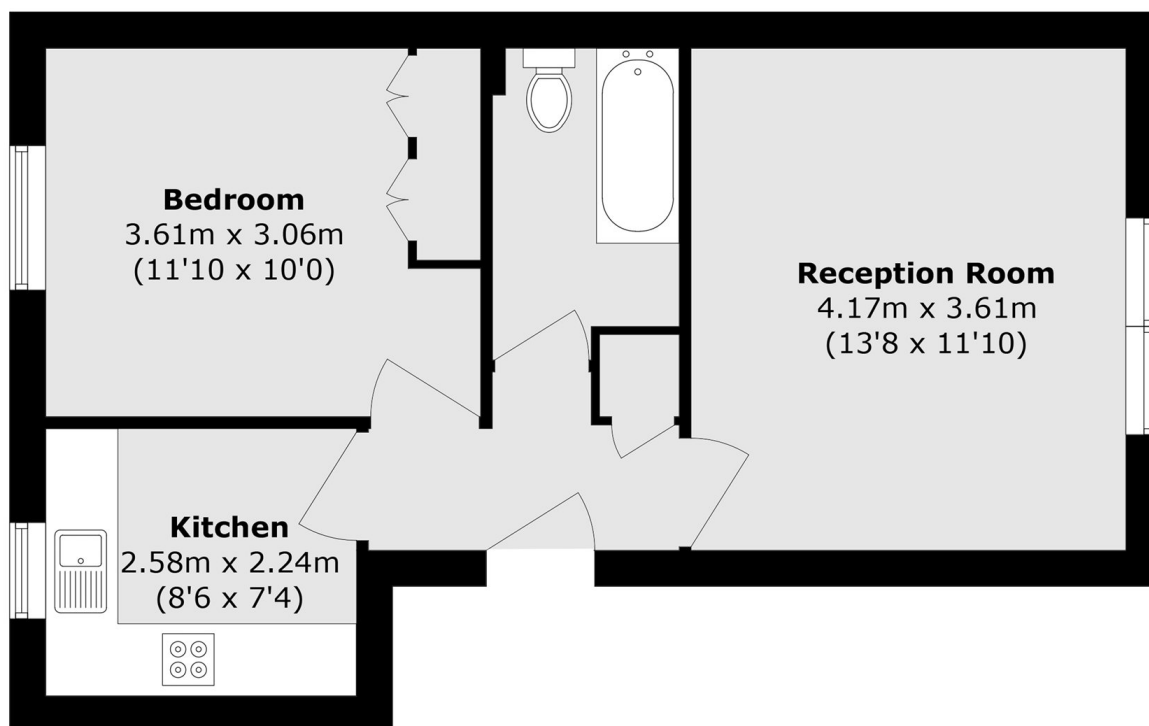
Rugby Road, TW1

£310,000

This modern one bedroom apartment is set on the ground floor of a gated and quiet development with well maintained gardens. The apartment has a good sized reception room, one double bedroom, fully fitted kitchen and a modern bathroom. The property is presented in excellent condition throughout and has the added bonus of a private parking space.

Rugby Road is positioned opposite Twickenham Stadium and TW2 Gym. Twickenham Station is a short walk away for fast trains into central London in just over 20 minutes, and all the amenities of Twickenham and St Margarets are also nearby.

- One Double Bedroom • Private Parking • Gated Development •
- New Extended Lease • Communal Gardens • Close to Transport Links •



Total area (approx.): 40.5 sq. m (435.9 sq. ft)

Snellers Twickenham Sales
64-66 Heath Road
Twickenham
TW1 4BX
020 8892 5555
twickenhamsales@snellers.co.uk

Energy Rating: D We aim to make our particulars both accurate and reliable. However they are not guaranteed; nor do they form part of an offer or contract. If you require clarification on any points then please contact us, especially if you're traveling some distance to view. Please note that appliances and heating systems have not been tested and therefore no warranties can be given as to their good working order