



## Algar Road, TW7

£550,000

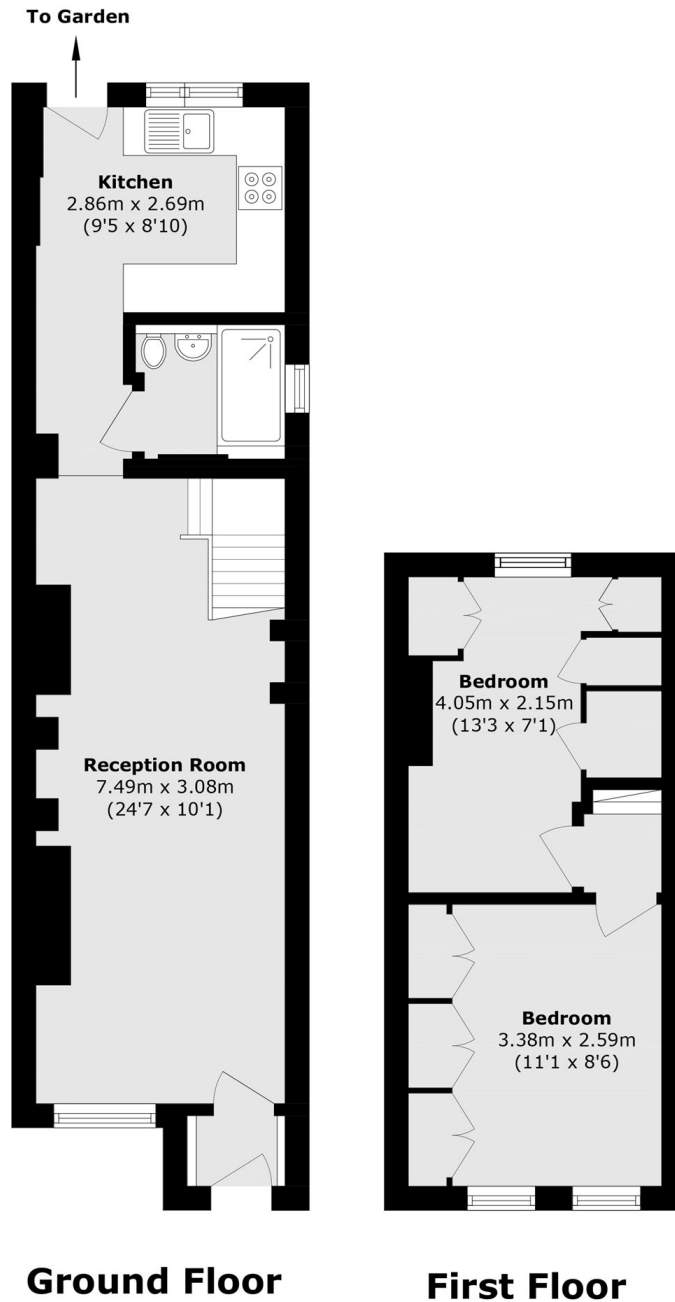
A charming two-bedroom end-of-terrace Victorian home offering well-proportioned living space, period character, and a private rear garden on sought-after Algar Road.

Algar road is a quiet residential road in Old Isleworth and is in close proximity to Richmond town Centre. It also offers easy access to Twickenham and St Margarets with a vast array of local amenities on its doorstep.

- Two Double Bedrooms • Private Garden • Side Access •
- Modern Finish • Period Victorian Character • Close to Amenities & Transport Links •

# SNELLERS

ESTATE AGENTS



Total area (approx.): 62.7 sq. m (674.9 sq. ft)

Snellers St. Margarets Sales  
36 Crown Road  
St Margarets  
TW1 3EH  
020 8892 8008  
[stmargaretssales@snellers.co.uk](mailto:stmargaretssales@snellers.co.uk)

Energy Rating: D We aim to make our particulars both accurate and reliable. However they are not guaranteed; nor do they form part of an offer or contract. If you require clarification on any points then please contact us, especially if you're traveling some distance to view. Please note that appliances and heating systems have not been tested and therefore no warranties can be given as to their good working order