

SNELLERS

ESTATE AGENTS



Herbert Place, TW7

£700,000

Offered to the market with no onward chain is this beautifully presented and well proportioned three bed, two bath townhouse including off-street parking and an integral garage.

Arranged over three floors the accommodation offers an entrance hallway, a downstairs W.C, an integrated garage, and an open plan kitchen/ dining area with double doors onto a private garden.

On the first floor there is a generous double bedroom, a family bathroom and a spacious reception room with Juliette balcony. On the top floor there is a principle bedroom with an en suite shower room and a further double bedroom.

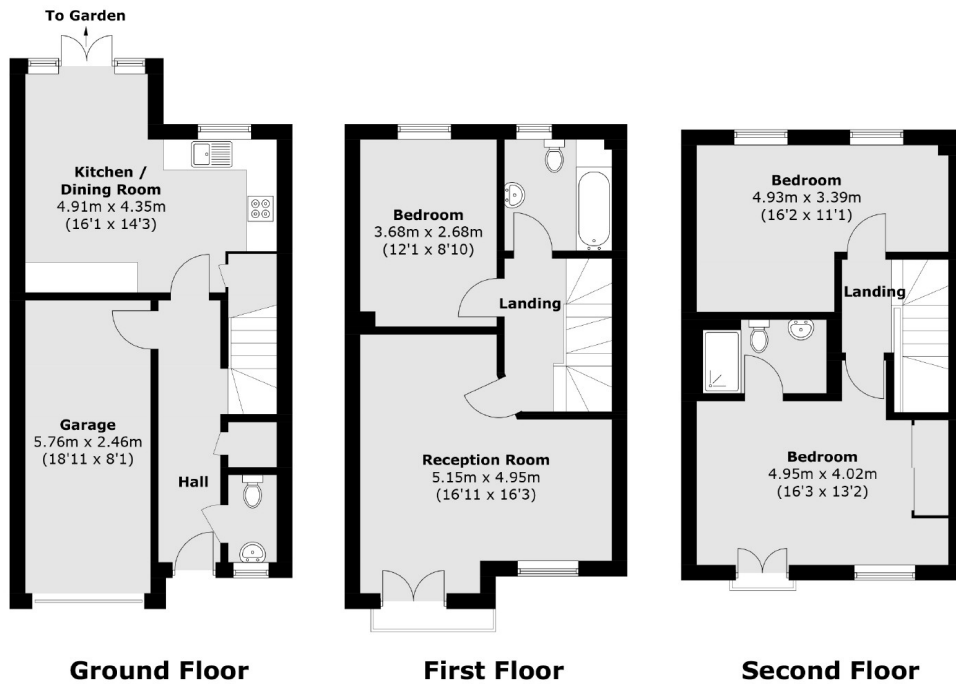
The property also benefits from visitor parking bays.

Herbert Place is a quiet cul-de-sac located off Spring Grove Road. The property is well placed for easy access to Osterley tube & Isleworth Train Station. The amenities of Isleworth are within easy walking distance and St Margarets & Richmond town centres are also close by.

- End of Terrace • Three Double Bedrooms • Excellent Condition •
- Off-Street Parking & Garage • Quiet Residential Road • No Onward Chain •

SNELLERS

ESTATE AGENTS



Total area (approx.): 129.4 sq. m (1,392.8 sq. ft)

Snellers St. Margarets Sales
36 Crown Road
St Margarets
TW1 3EH
020 8892 8008
stmargaretssales@snellers.co.uk

Energy Rating: We aim to make our particulars both accurate and reliable. However they are not guaranteed; nor do they form part of an offer or contract. If you require clarification on any points then please contact us, especially if you're traveling some distance to view. Please note that appliances and heating systems have not been tested and therefore no warranties can be given as to their good working order