

# SNELLERS

ESTATE AGENTS

---



**Leigham Drive, TW7**

**£1,025,000**

This impressive double-fronted 1930s home immediately stands out, offering a rare chance to own a beautifully proportioned family house with real presence and character. Spanning approximately 2,075 sq ft and arranged over two floors, the space feels generous, balanced and incredibly versatile ideal for modern family living. Original period features sit comfortably alongside contemporary updates, creating a home that feels both classic and current.



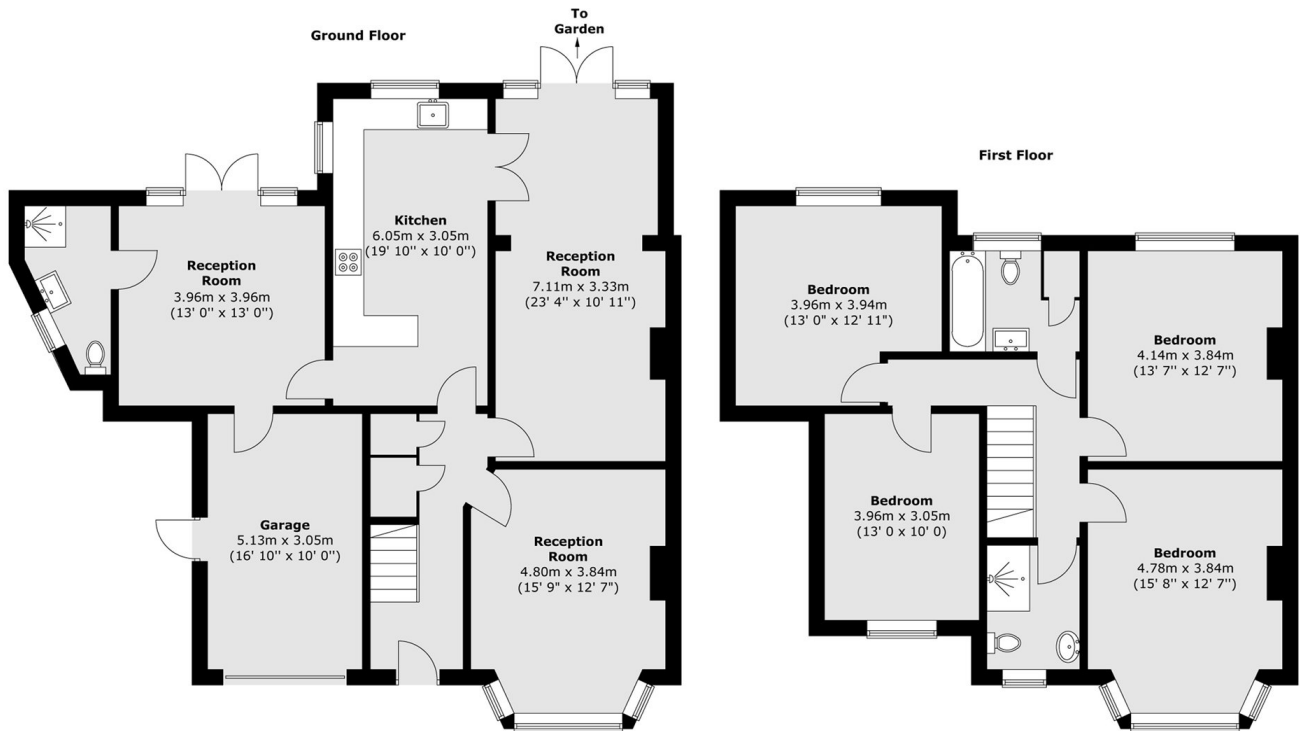
The house has been substantially extended to the side, rear and upstairs, meaning there's no shortage of room to spread out. Whether it's relaxed family time, entertaining friends, working from home or future-proofing for growing needs, the layout adapts easily to whatever life throws at it. Every room feels well thought out, with great natural light and a sense of flow that makes the house a pleasure to live in.

The house has been substantially extended to the side, rear and upstairs, meaning there's no shortage of room to spread out. Whether it's relaxed family time, entertaining friends, working from home or future-proofing for growing needs, the layout adapts easily to whatever life throws at it. Every room feels well thought out, with great natural light and a sense of flow that makes the house a pleasure to live in.



# SNELLERS

ESTATE AGENTS



Total area (approx.) : 192.8 sq. m (2075 sq. ft)

Snellers St. Margarets Sales  
36 Crown Road  
St Margarets  
TW1 3EH  
020 8892 8008  
[stmargaretssales@snellers.co.uk](mailto:stmargaretssales@snellers.co.uk)

Energy Rating: We aim to make our particulars both accurate and reliable. However they are not guaranteed; nor do they form part of an offer or contract. If you require clarification on any points then please contact us, especially if you're traveling some distance to view. Please note that appliances and heating systems have not been tested and therefore no warranties can be given as to their good working order