



## St. Johns Road, TW7

£475,000

This simply stunning two-bedroom penthouse apartment offers bright, generous accommodation within an exclusive modern gated development in the heart of Isleworth. Immaculately presented throughout, the home combines stylish design with a well-considered layout that suits modern living.

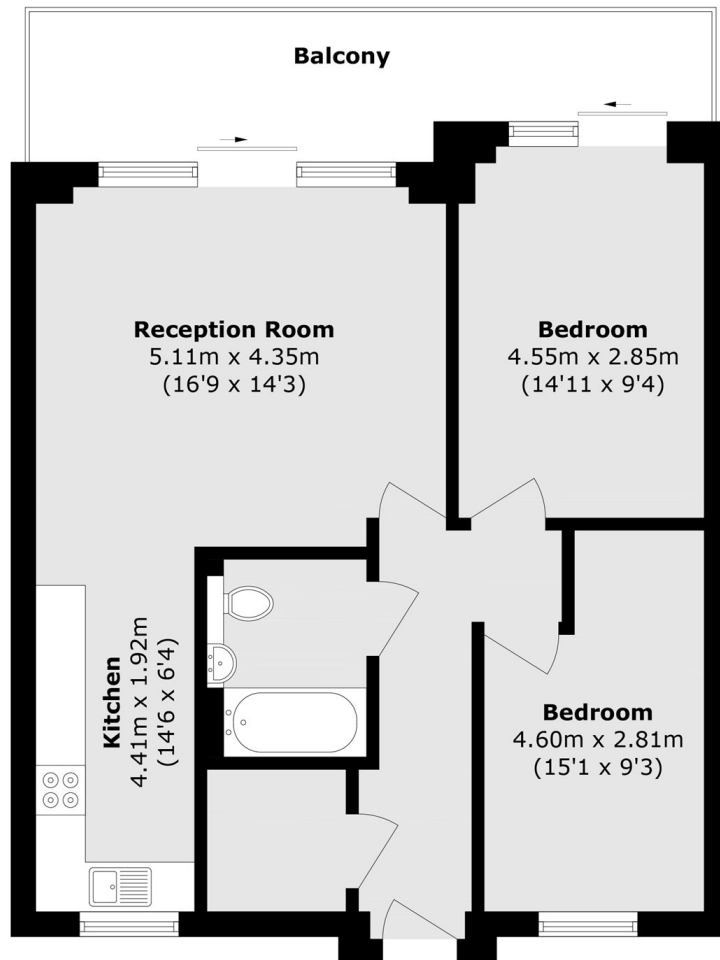
Located on the top floor of a lift-serviced building, the apartment is centred around an expansive open-plan kitchen, living, and dining space. This impressive room works beautifully for both everyday living and entertaining, with large sliding doors opening onto a substantial private balcony that stretches across the full width of the property. The result is a light-filled interior with a seamless connection between indoor and outdoor space, complemented by far-reaching views across the London skyline.

The location offers a great balance of convenience and a relaxed residential feel. With local amenities and transport links within easy reach, getting around day to day is straightforward, while the setting still feels calm and established an ideal base for modern living.

- Two Double Bedrooms • Large Balcony • Stunning Views •
- Great Location • Large Parking Space •

# SNELLERS

ESTATE AGENTS



Total area (approx.): 72.7 sq. m (782.5 sq. ft)  
Balcony area (approx.): 13.3 sq. m (143.2 sq. ft)

Snellers St. Margarets Sales  
36 Crown Road  
St Margarets  
TW1 3EH  
020 8892 8008  
[stmargaretssales@snellers.co.uk](mailto:stmargaretssales@snellers.co.uk)

Energy Rating: B We aim to make our particulars both accurate and reliable. However they are not guaranteed; nor do they form part of an offer or contract. If you require clarification on any points then please contact us, especially if you're traveling some distance to view. Please note that appliances and heating systems have not been tested and therefore no warranties can be given as to their good working order