

SNELLERS

ESTATE AGENTS



Ducks Walk, TW1

£700,000

Riverside Mooring with Exceptional Potential Moments from Richmond Bridge

A truly rare opportunity to acquire a freehold mooring with direct River Thames frontage in one of Richmond's most sought-after locations just a five-minute walk from Richmond Bridge and the town centre.

Set on a tranquil stretch of the Thames, this wide residential mooring currently accommodates three houseboats and includes an adjoining section of riverside land offering scope for further development (subject to the necessary consents).

While the existing structures require replacement or refurbishment, the site provides a blank canvas for an imaginative buyer to create a bespoke floating home or potentially construct an innovative stilted dwelling on the adjoining land all within this prestigious riverside setting.

The position is nothing short of exceptional: enjoy uninterrupted river views, peaceful surroundings, and convenient access to the vibrant amenities, boutiques, restaurants, and transport links of Richmond town centre.

Key Highlights:

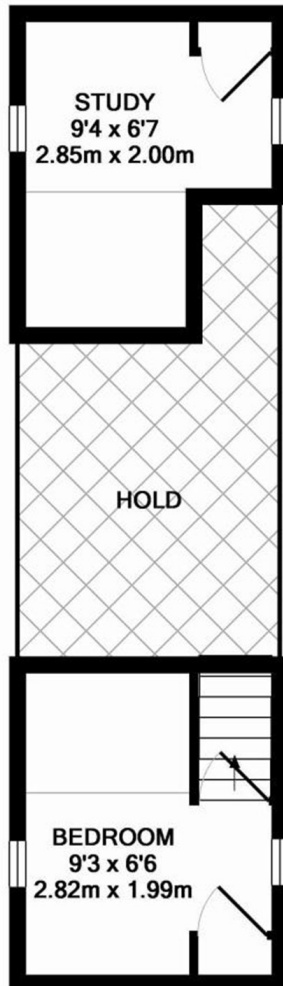
- Prime mooring on the main stream of the River Thames
- Outstanding location, just 5 minutes' walk from Richmond Bridge and the riverside cafés and shops
- Space currently housing three houseboats with potential for reconfiguration or redevelopment
- Adjoining garden/land area offering scope for ancillary structures or stilted accommodation (subject to planning)
- Unique opportunity to design and build a custom floating home in a premier riverside setting

This offering represents one of the last remaining opportunities to secure a freehold mooring in central Richmond a perfect project for those seeking to create an extraordinary waterside residence or investment in one of London's most desirable riverside postcodes.

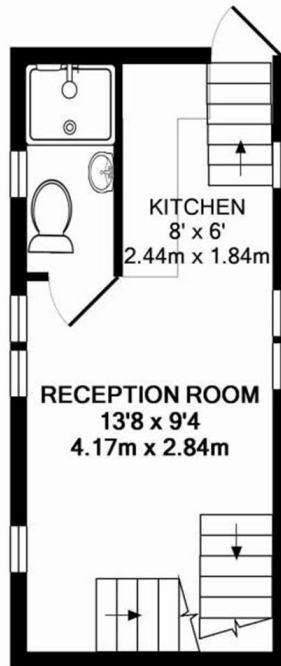
- Prime Mooring • Main Stream of River Thames • 5 minutes to Richmond Bridge •
- Blank Canvas •

SNELLERS

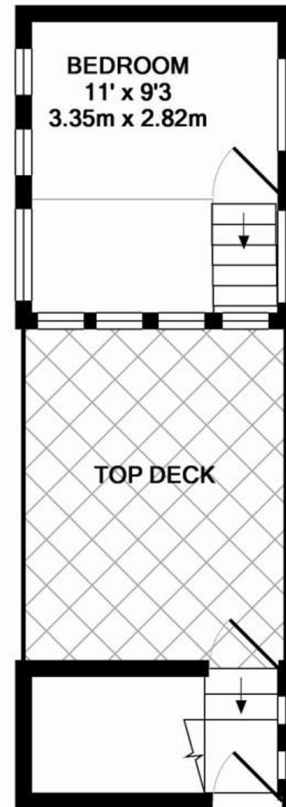
ESTATE AGENTS



LOWER DECK
APPROX. FLOOR
AREA 201 SQ.FT.
(18.7 SQ.M.)



MID DECK
APPROX. FLOOR
AREA 204 SQ.FT.
(19.0 SQ.M.)



TOP DECK
APPROX. FLOOR
AREA 149 SQ.FT.
(13.8 SQ.M.)

DUCKS WALK, TW1
TOTAL APPROX. FLOOR AREA 554 SQ.FT. (51.4 SQ.M.)

All measurements taken to RICS Guidelines for Gross Internal Area. Whilst every attempt has been made to ensure the accuracy of the floor plan contained here, all measurements are approximate and no responsibility is taken for any error, omission or misstatement. This plan is for illustrative purposes only and should be used as such by any prospective purchaser. The services, systems and appliances shown have not been tested and no guarantee as to their operability or efficiency can be given.

Made with Metropix ©2013

Snellers St. Margarets Sales
36 Crown Road
St Margarets
TW1 3EH
020 8892 8008
stmargaretssales@snellers.co.uk

Energy Rating: We aim to make our particulars both accurate and reliable. However they are not guaranteed; nor do they form part of an offer or contract. If you require clarification on any points then please contact us, especially if you're traveling some distance to view. Please note that appliances and heating systems have not been tested and therefore no warranties can be given as to their good working order