

SNELLERS

ESTATE AGENTS



St. Johns Road, TW7

£749,950

Tucked away at the end of a terrace, this beautiful three-bedroom period home is one of those places that just feels right the moment you walk up to it. It's full of character, packed with style, and absolutely stunning throughout. Being end-of-terrace, you get that extra sense of space and light, and it really does feel like a home you can grow into and enjoy for years to come.



Step inside and you've got two adjoining reception rooms on the ground floor that flow effortlessly into one another. It's the kind of layout that works perfectly whether you're hosting friends, having family over for Sunday lunch, or just stretching out on the sofa after a long day. You can imagine one room as a cosy lounge with a big corner sofa and soft lighting, while the other becomes a more formal dining space or even a playroom or home office. To the rear, there's a gorgeous kitchen/breakfast room that really is the heart of the home. It's stylish, welcoming and practical somewhere you can cook, chat, sip your morning coffee and watch the garden through the window.

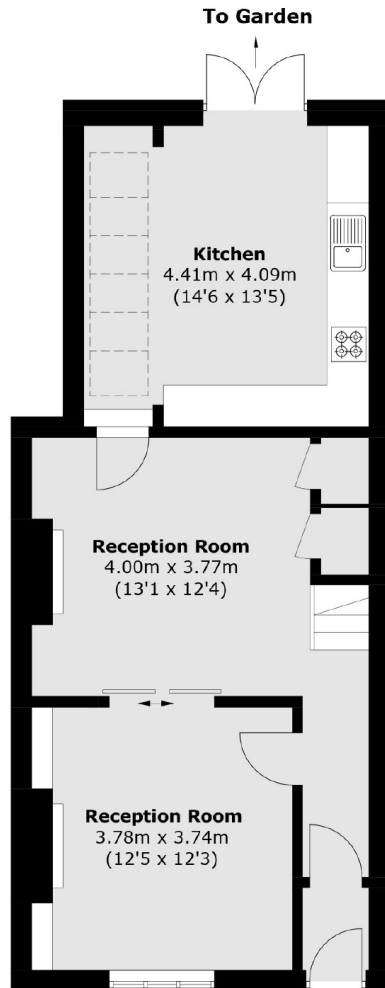
Upstairs, the three bedrooms are beautifully presented and feel calm and inviting. The main bedroom is a lovely retreat at the end of the day think soft throws, warm lighting and plenty of space for wardrobes and storage. The second bedroom is another generous double, perfect for guests, kids or even a dressing room if you fancy a bit of luxury. The third bedroom makes a brilliant nursery, home office or single room, depending on what you need. It's easy to picture each space adapting as life changes.

Outside, the garden is such a bonus. It's a great size big enough to really enjoy, but designed to be low maintenance so you're not spending every weekend mowing or weeding. You can imagine summer barbecues, a morning coffee in the sunshine, or a glass of wine in the evening while the sun goes down.

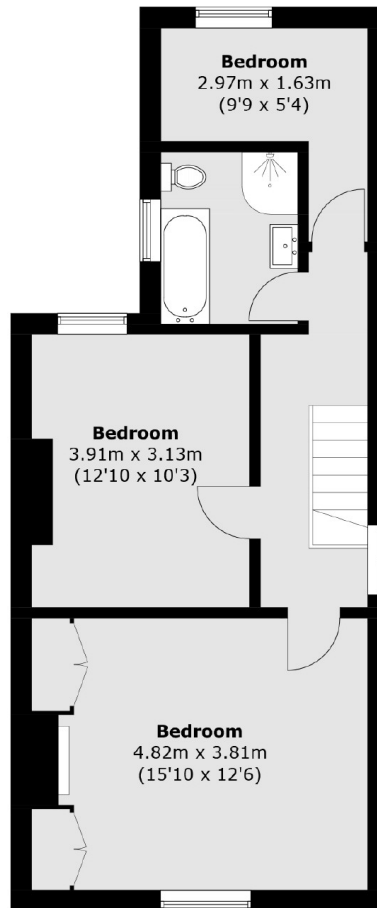


SNELLERS

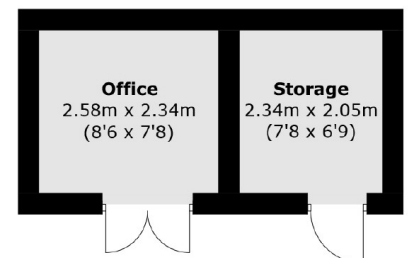
ESTATE AGENTS



Ground Floor



First Floor



**(Not Shown In Actual
Location / Orientation)
Outbuilding**

Total area (approx.): 107.3 sq. m (1,154.9 sq. ft)
Outbuilding: 11.1 sq. m (119.5 sq. ft)

Snellers St. Margarets Sales
36 Crown Road
St Margarets
TW1 3EH
020 8892 8008
stmargaretssales@snellers.co.uk

Energy Rating: D We aim to make our particulars both accurate and reliable. However they are not guaranteed; nor do they form part of an offer or contract. If you require clarification on any points then please contact us, especially if you're traveling some distance to view. Please note that appliances and heating systems have not been tested and therefore no warranties can be given as to their good working order