

St. Anns Terrace, NW8

£2,500 Per week

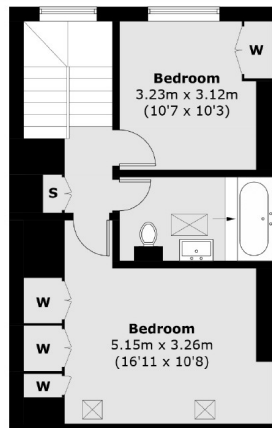
A newly refurbished five bedroom townhouse arranged over four floors located just off St John's Wood High Street and a short distance to St John's Wood underground station.

St Ann's Terrace is a great location for a family looking to be close to the American School, Regent's Park and transport links into the City.

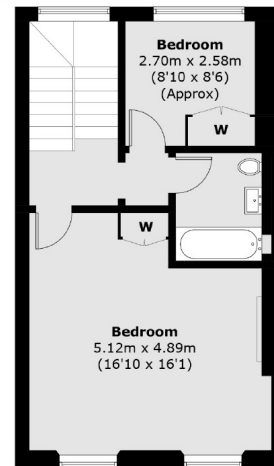
Features

Newly Refurbished
Five Bedroom House
Arranged Over Four Floors
Private Rear Garden
Modern Eat-In Kitchen
Spacious Reception Room

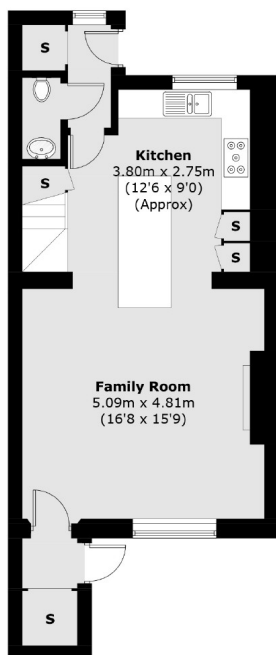
St. Anns Terrace, London, NW8



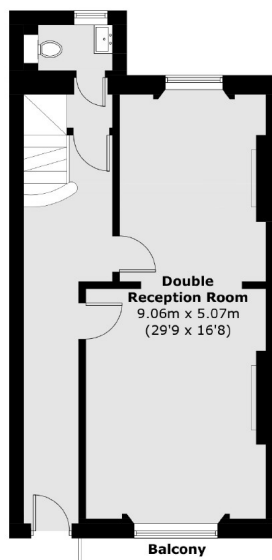
Third Floor



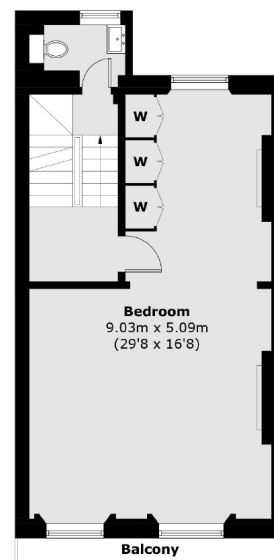
Second Floor



Lower Ground Floor



Ground Floor



First Floor

Total area (approx.): 233.8 sq. m (2,516 sq. ft)
Balcony area : 4.8 sq. m (52 sq. ft)

Contact

To arrange a viewing call our office on the number below or visit our website.



Energy Rating: D. We aim to make our particulars both accurate and reliable. However they are not guaranteed; nor do they form part of an offer or contract. If you require clarification on any points then please contact us, especially if you're traveling some distance to view. Please note that appliances and heating systems have not been tested and therefore no warranties can be given as to their good working order.