

Avenue Road, NW8

£1,900 Per week

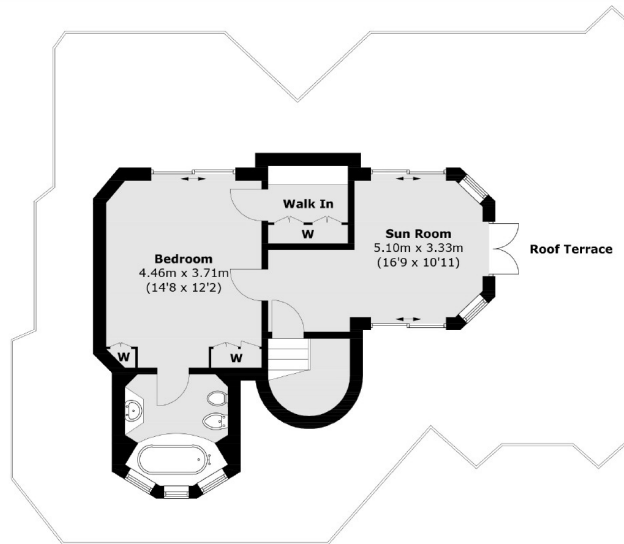
A spacious 2309 sq ft five bedroom, five bathroom split level penthouse apartment with wrap around roof terrace and underground parking.

Avenue Road is ideally located close the open spaces of Primrose Hill and Regent's Park and a short distance to St John's Wood High Street and underground station.

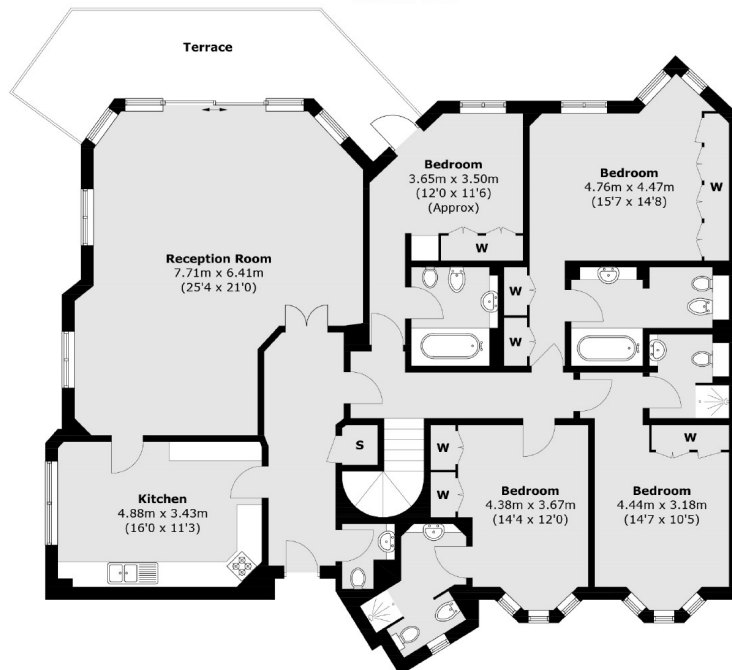
Features

- Five Double Bedrooms
- Five Bathrooms
- Penthouse Apartment
- Arranged Over Two Floors
- Underground Parking
- Wrap Around Roof Terrace

Avenue Road, London, NW8



Third Floor



Second Floor

Total area (approx.): 222.1 sq. m (2,390.5 sq. ft)
Roof Terrace area : 119.6 sq. m (1,287.3 sq. ft)

Contact

To arrange a viewing call our office on the number below or visit our website.



Energy Rating: D. We aim to make our particulars both accurate and reliable. However they are not guaranteed; nor do they form part of an offer or contract. If you require clarification on any points then please contact us, especially if you're traveling some distance to view. Please note that appliances and heating systems have not been tested and therefore no warranties can be given as to their good working order.