



## Lyons Place, NW8

**£485** Per week

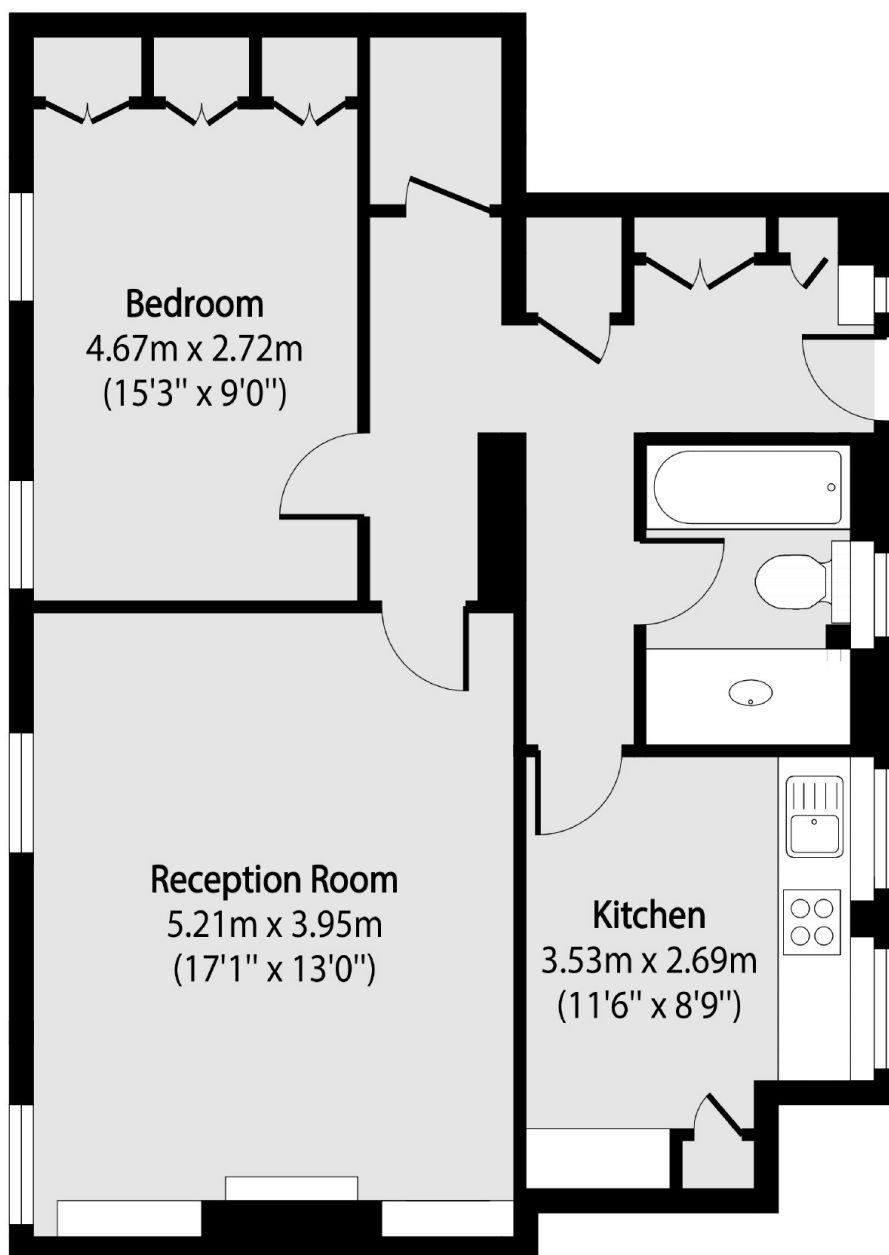
A spacious one double bedroom apartment on the ground floor of a purpose built block. Bright reception room, separate kitchen, double bedroom with built in storage, bathroom with shower over bath. The property has wood floors and ample storage throughout.

Cooper Houser is located a short distance to local shops, cafés and restaurants on Edgware Road and Little Venice.

### Features

- One Double Bedroom
- Spacious Reception Room
- Separate Kitchen
- Good Storage Throughout
- Wood Floors
- Purpose Built Block

# Lyons Place, London, NW8



Total area (approx): 61.90 sq m (666 sq. ft)