



## Charlbert Street, NW8

£565,000

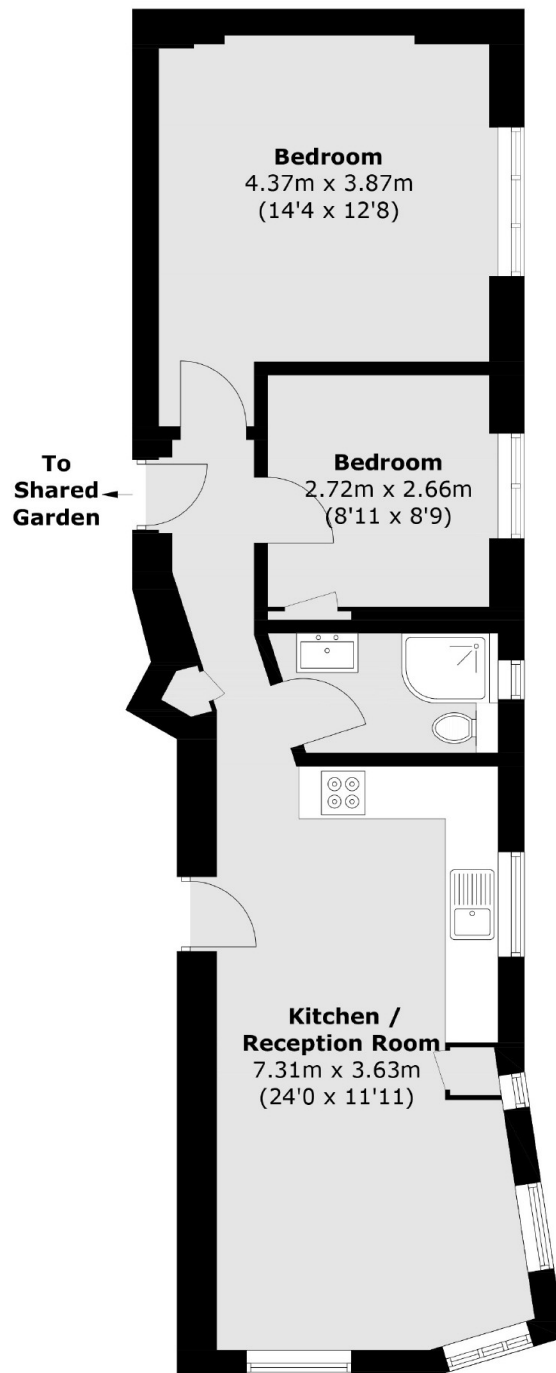
Located close to Regents Park and St John's Wood High Street is this lovely chain free, two bedroom apartment situated within a small purpose built block, benefitting from direct access to the communal gardens.

Charlbert Court is located on Charlbert Street, circa 300 metres to St John's Wood High Street and circa 100 metres to Regent's Park. St. John's Wood Underground Station is around 600 metres away.

### Features

- Chain Free
- Two Bedrooms
- Good Condition
- Purpose Built
- Day Porter
- Communal Garden

Charlbert Street,  
London, NW8



Total area (approx.): 53.0 sq. m (570.5 sq. ft)

**Dexters**

St. John's Wood  
4-6 St Ann's Terrace  
London  
NW8 6PJ  
Sales  
020 7483 6300

Energy Rating: D. We aim to make our particulars both accurate and reliable. However they are not guaranteed; nor do they form part of an offer or contract. If you require clarification on any points then please contact us, especially if you're traveling some distance to view. Please note that appliances and heating systems have not been tested and therefore no warranties can be given as to their good working order.

 **RICS** | Regulated  
Estate Agent  
and Letting Agent

[dexters.co.uk](https://www.dexters.co.uk)