



Hall Road, NW8

£925,000

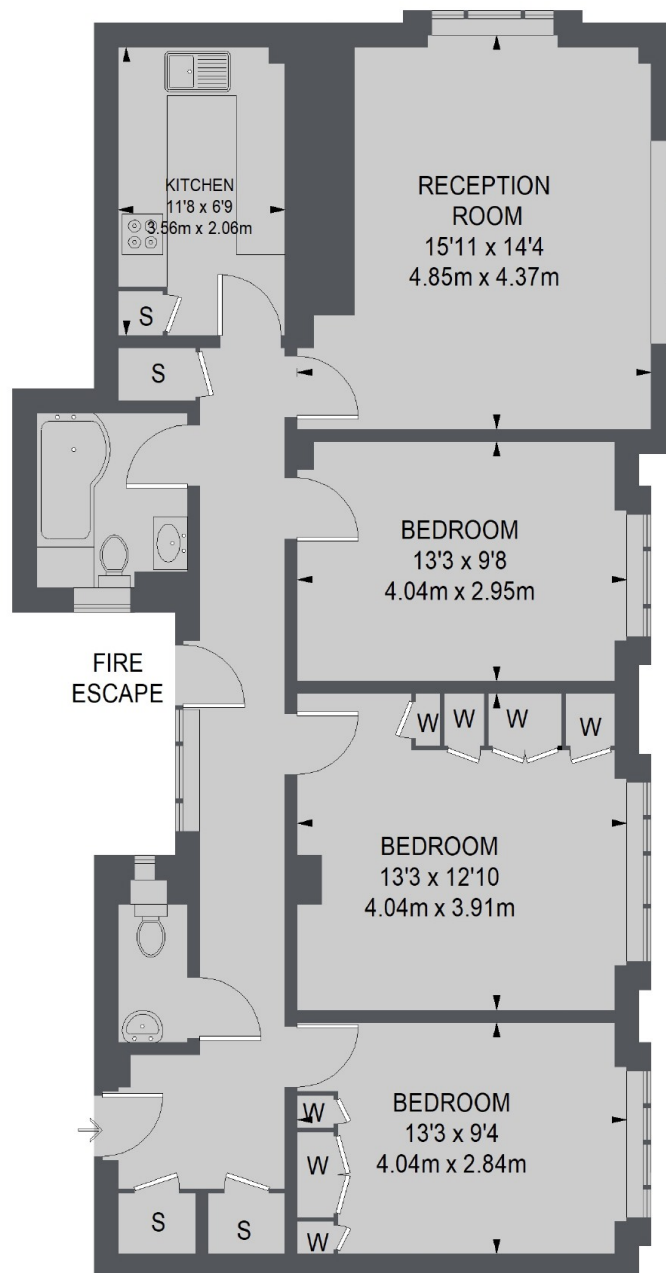
A bright and spacious three bedroom apartment, set on the sixth floor of a portered building in St. John's Wood. There is a large reception room with double aspect windows, three large bedrooms, a family bathroom and a separate WC.

Grove Hall Court is located close to St Johns Wood High Street and underground station (Jubilee Line). This popular building benefits from portage, lift in the building and just a short walk from Lords cricket ground.

Features

Three Bedrooms
Large Reception
Sixth Floor
Lift
Portered Building
Great Views

Hall Road, London, NW8



SIXTH FLOOR

TOTAL APPROX. FLOOR AREA
998 SQ. FT. (92.70 SQ. M.)