



Mallory Street, NW8

£692 Per week

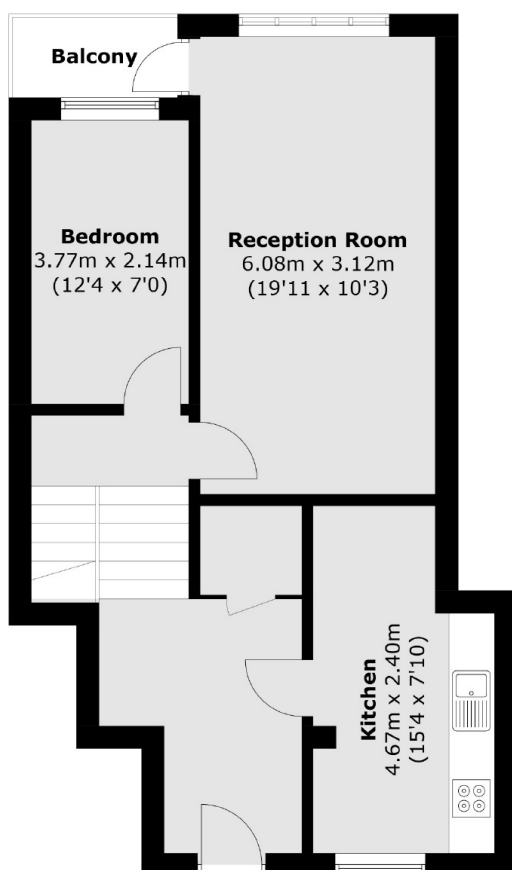
Spacious three-bedroom split-level HMO in Risborough House. Featuring two private balconies, a bright and airy reception room, modern fitted kitchen, well-presented bathroom, and an additional guest cloakroom. Ideally located moments from Marylebone Station and local amenities.

Perfectly positioned in the heart of NW8, this property benefits from excellent connectivity and vibrant surroundings. Located just a short walk from Marylebone Station (National Rail & Bakerloo Line), it offers fast and easy access to central London, the West End, and beyond.

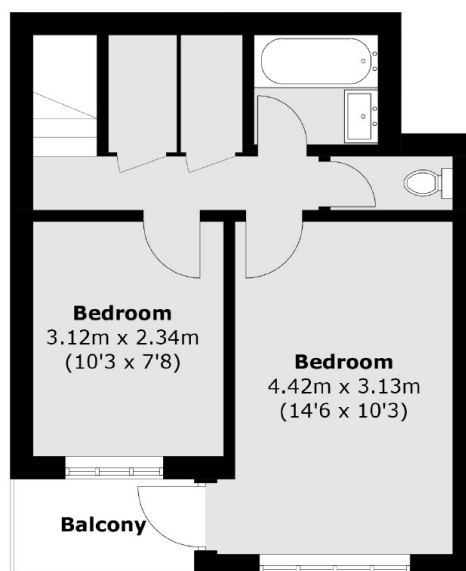
Features

- Three Double Bedroom
- Bright Reception
- Two private balconies
- Fitted Kitchen
- Storage Throughout
- Exceptional Location

Mallory Street, London, NW8



Ground Floor



First Floor

Total area (approx.): 87.6 sq. m (942.8 sq. ft)
Balcony area: 5.3 sq. m (57.0 sq. ft)