



## Wellington Road, NW8

£1,096 Per week

A modern two bedroom apartment set within this St John's Wood portered building. The property has a large reception room with a dining area, separate kitchen and two bathrooms.

Cavendish House is ideally located less than 50 metres from St Johns Wood High Street and near Regents Park.

### Features

- Modern Apartment
- Two Double Bedrooms
- Two Bathrooms
- Portered Block
- Wood Floors
- Spacious Living Room

# Wellington Road, London, NW8

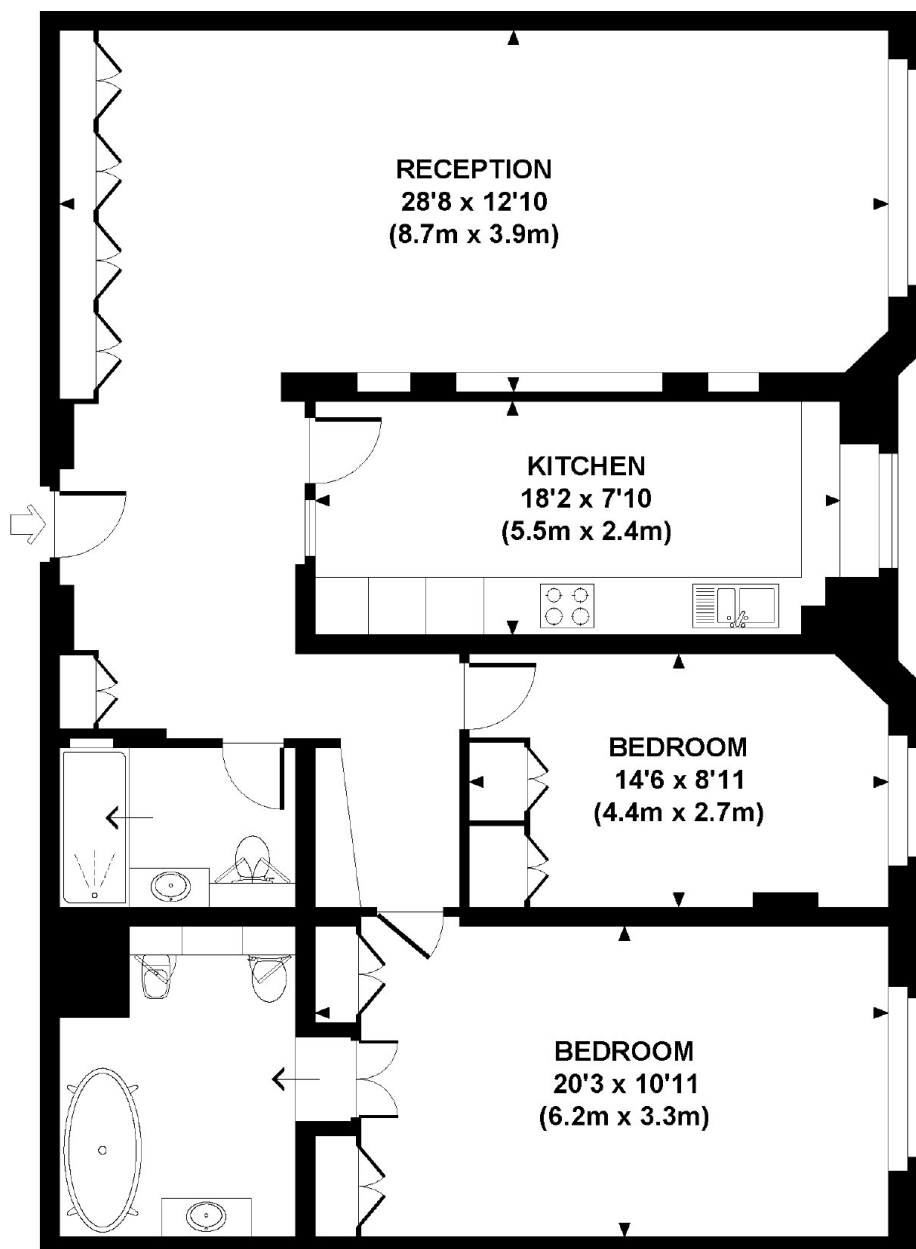
## CAVENDISH HOUSE, WELLINGTON ROAD, NW8

Approx. gross internal area

1178 Sq Ft. / 109.6 Sq M.

Representation of current layout.

Not to scale.



# Dexters

St. John's Wood  
4-6 St Ann's Terrace  
London  
NW8 6PJ

Lettings  
020 7483 6330

Energy Rating: B. We aim to make our particulars both accurate and reliable. However they are not guaranteed; nor do they form part of an offer or contract. If you require clarification on any points then please contact us, especially if you're traveling some distance to view. Please note that appliances and heating systems have not been tested and therefore no warranties can be given as to their good working order.



dexters.co.uk