



St. Johns Wood Road, NW8

£726 Per week

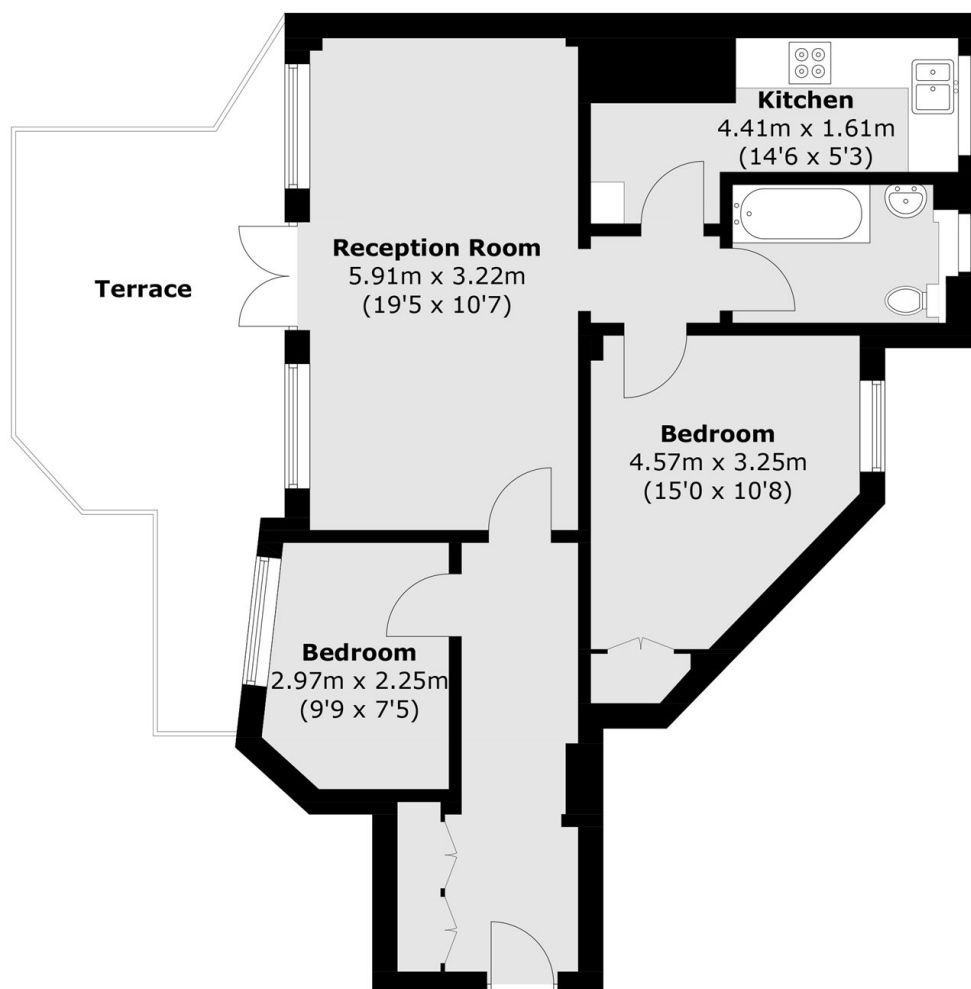
A beautifully presented two-bedroom, one-bathroom apartment in the highly sought-after St John's Wood Court, complete with a stunning private roof terrace. Two double bedrooms with wooden floors throughout. Situated on the top floor with a lift, you also have a 24 hour porter and heating and hot water included within the rent.

St John's Wood Court is located close to Lords Cricket Ground and Regents Park.

Features

- Two Double Bedrooms
- Top Floor Via Lift
- Private Roof Terrace
- Wood Floors Throughout
- Heating And Hot Water
- 24 Hour Porter

St. Johns Wood Road,
London, NW8



Total area (approx.): 63.3 sq. m (681.4 sq. ft)
Terrace: 17.8 sq. m (191.6 sq. ft)