



## Abbey Road, NW8

### £700,000

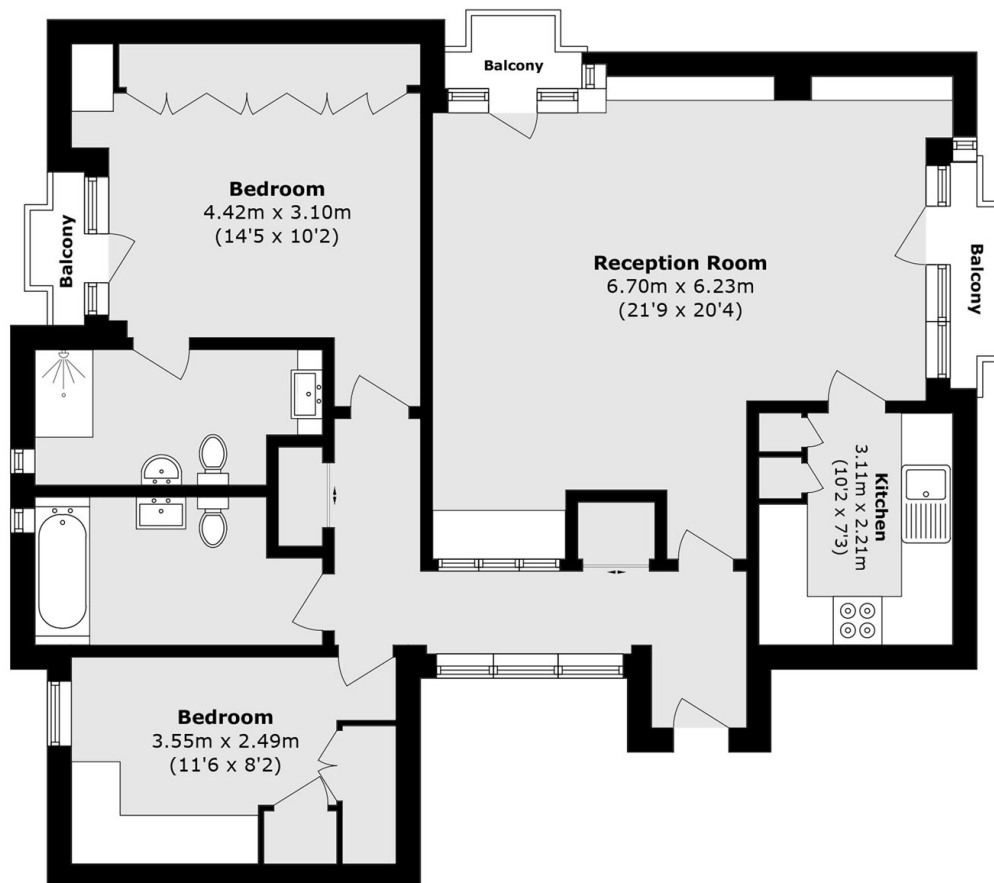
A finely presented and well-proportioned two bedroom, two bathroom apartment situated on the first floor of this popular portered development on the iconic Abbey Road. The property offers a spacious reception room, fully functional kitchen, and the rare benefit of a secure allocated parking space.

Perfectly located within easy reach of St John's Wood tube (Jubilee line) and Maida Vale tube (Bakerloo Line), with plentiful bus routes on Abbey Road as well as the boutiques, cafés and restaurants of St John's Wood High Street.

### Features

- Spacious Reception Room
- Two Bathrooms
- Allocated Parking Space
- Concierge Service
- Lift Access
- Separate Storage Room

# Abbey Road, London, NW8



Total area (approx.): 89.1 sq. m (959.1 sq. ft)

Balcony area (approx.): 3.6 sq. m (38.8 sq. ft)