



## Grove End Road, NW8

£375,000

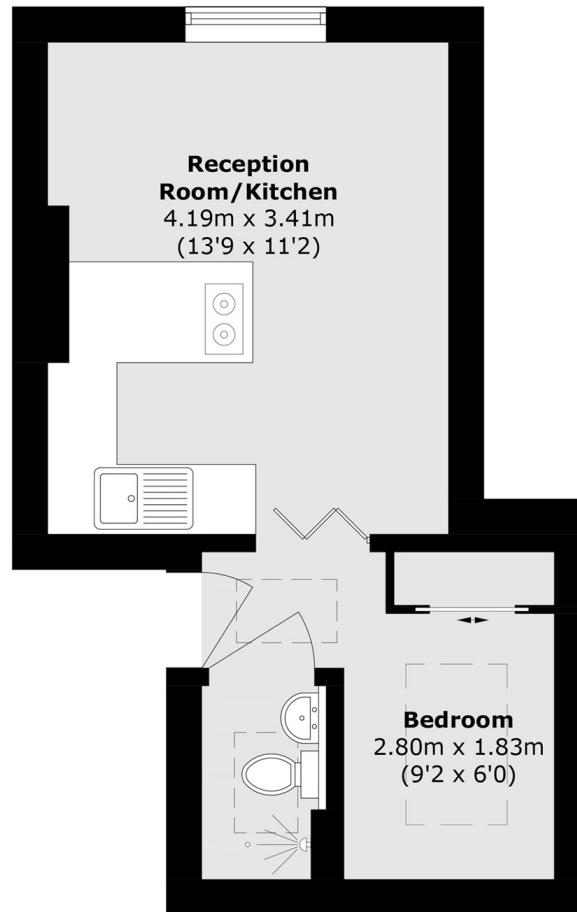
A well-presented one-bedroom apartment set on the sixth floor and offered chain free. The property features wood flooring throughout and a bright open-plan kitchen/reception room with far-reaching outlooks. An ideal purchase for first-time buyers or investors.

Located in a convenient St John's Wood setting, Bronwen Court is close to the amenities of St John's Wood High Street and the open spaces of Regent's Park. The area benefits from a strong residential feel with excellent connectivity. Transport links include St John's Wood Underground Station (Jubilee Line) and nearby bus routes.

### Features

- One Bedroom
- Chain Free
- Sixth Floor
- Open Plan Kitchen
- Central Location
- Communal Hot Water

Grove End Road,  
London, NW8



Total area (approx.): 23.1 sq. m (248.6 sq. ft)

**Dexters**

St. John's Wood  
4-6 St Ann's Terrace  
London  
NW8 6PJ  
Sales  
020 7483 6300

Energy Rating: E. We aim to make our particulars both accurate and reliable. However they are not guaranteed; nor do they form part of an offer or contract. If you require clarification on any points then please contact us, especially if you're traveling some distance to view. Please note that appliances and heating systems have not been tested and therefore no warranties can be given as to their good working order.

 **RICS** | Regulated  
Estate Agent  
and Letting Agent

[dexters.co.uk](https://www.dexters.co.uk)