



## Carlton Hill, NW8

### £2,150,000

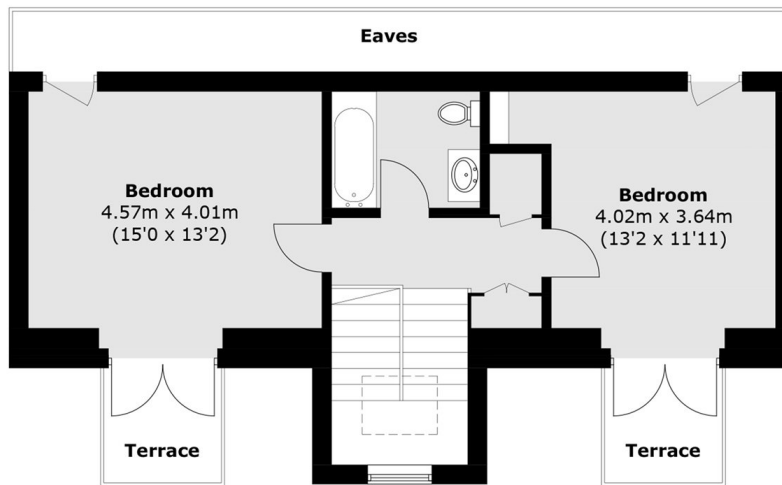
A stylish three-bedroom duplex apartment set within an elegant stucco-fronted residence. Recently refurbished, it offers bright modern interiors, a spacious reception with open-plan kitchen, and two south-facing balconies. Residents also enjoy access to a communal garden, terrace, and private parking.

Located in the heart of St John's Wood, Carlton Hill is a peaceful tree-lined street surrounded by period homes. The area offers easy access to St John's Wood High Street, Regent's Park, and Maida Vale. Excellent transport links include St John's Wood (Jubilee Line) and Maida Vale (Bakerloo Line) stations, both within walking distance.

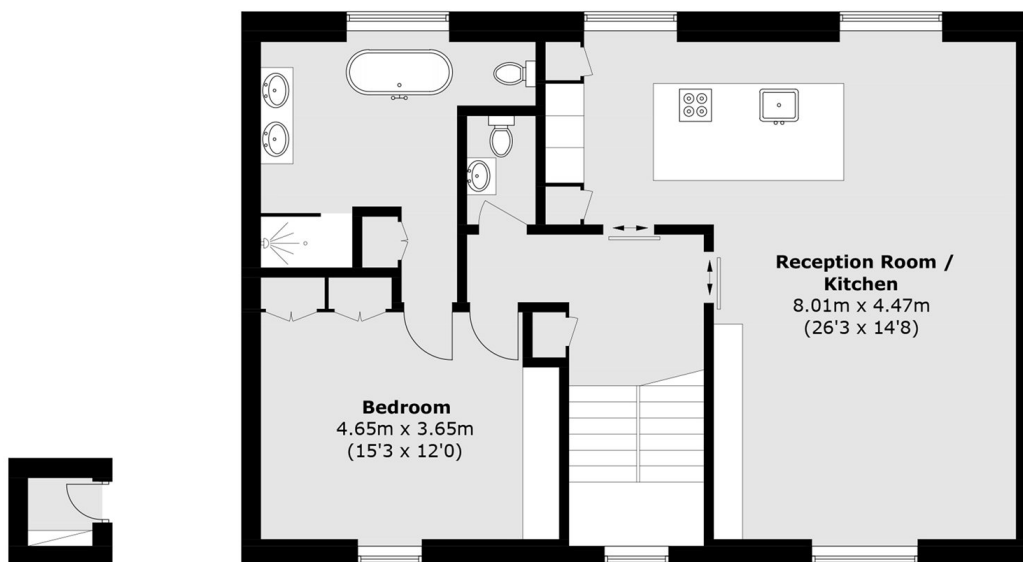
### Features

- Approximately 1800 Sq.Ft
- Chain Free
- Three Bedrooms
- Two Balconies
- Off Street Parking
- Communal Garden

# Carlton Hill, London, NW8



**Third Floor**



**First Floor**

**Second Floor**

Total area (approx.): 143.0 sq. m (1,539.2 sq. ft)

Terrace: 6.5 sq. m (70.0 sq. ft)

(Excluding Eaves)