



Whiteheads Grove, SW3

£1,250,000

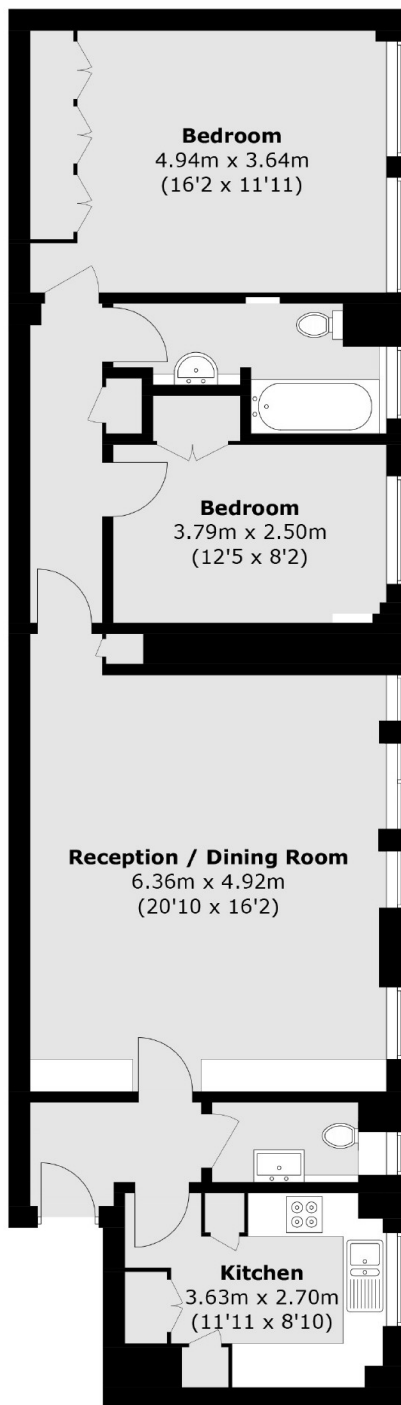
A wonderful two bedroom apartment with plenty of character located on the fourth floor with lift access and 24 hour portorage. This property measures close to 1000sqft and benefits from a share of the freehold.

Cranmer Court is located in the heart of Chelsea, within easy reach of South Kensington and Sloane Square underground stations, as well as only moments away from the King's Road offering an excellent variety of shops, bars and restaurants.

Features

- Share Of Freehold
- Lift
- 24 Hour Portorage
- Two Bedrooms
- Fourth Floor
- Large Reception Room

Whiteheads Grove, London, SW3



Fourth Floor

Total area (approx.): 89.9 sq. m (967.7 sq. ft)

Dexters

Chelsea and Belgravia
45 Sloane Avenue
London
SW3 3DH
Sales
020 7590 9510

Energy Rating: . We aim to make our particulars both accurate and reliable. However they are not guaranteed; nor do they form part of an offer or contract. If you require clarification on any points then please contact us, especially if you're traveling some distance to view. Please note that appliances and heating systems have not been tested and therefore no warranties can be given as to their good working order.

 **RICS** | Regulated
Estate Agent
and Letting Agent

[dexters.co.uk](https://www.dexters.co.uk)