



Chelsea Manor Street, SW3

£600,000

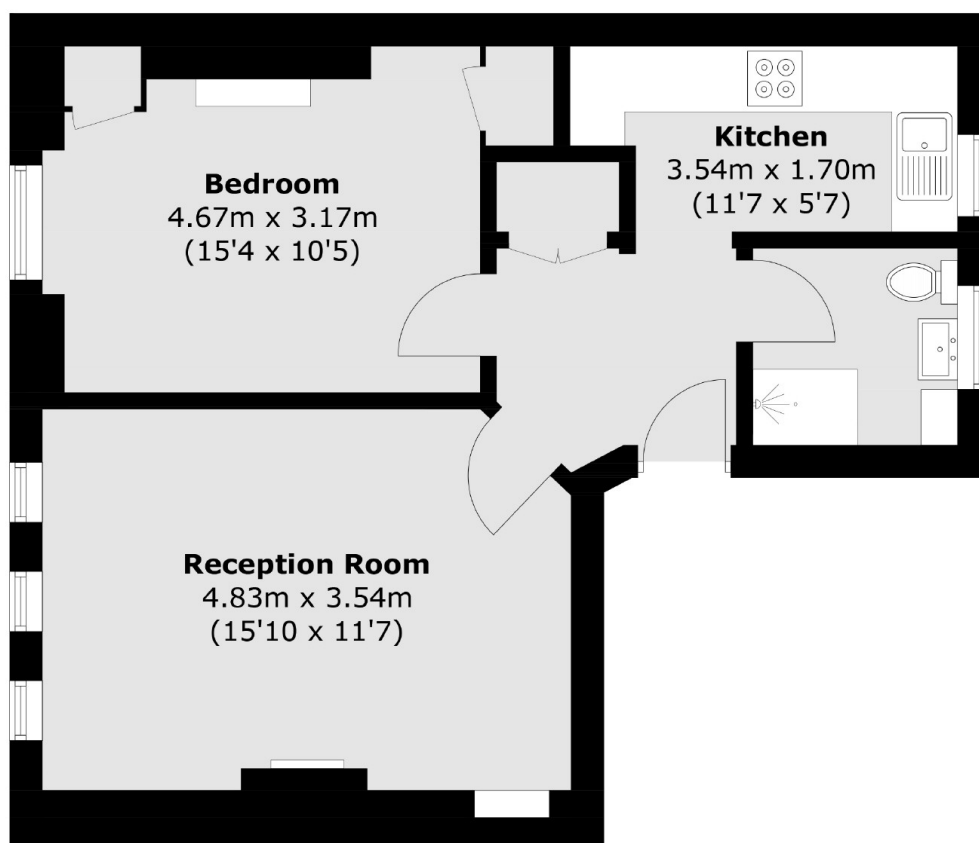
A lovely and bright one bedroom apartment in great condition throughout. This property is ideally located moments from the King's Road and would work perfectly as a long term investment.

Forsyte House is located north of the King's Road, moments from Chelsea Green and St Luke's Gardens. Sloane Square and South Kensington tube stations are both within walking distance.

Features

- One Bedroom
- Lift
- Great Condition
- Popular Location
- Separate Kitchen
- Third Floor

Chelsea Manor Street, London, SW3



Third Floor

Total area (approx.): 45.0 sq. m (483.9 sq. ft)