



Cheyne Walk, SW10

£500,000

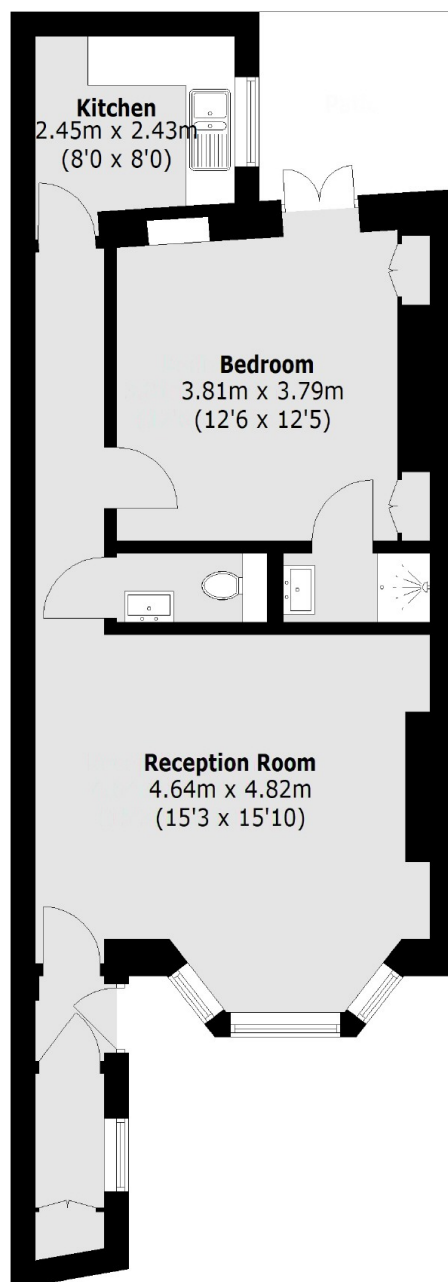
A beautifully refurbished garden flat in the heart of Chelsea with its own entrance. This property has perfectly balanced rooms and a private patio.

Cheyne Walk runs along the banks of the River Thames and is a short walk to the shops, restaurants and bars of the King's Road. The open green spaces of Battersea Park are also close by.

Features

- Share Of Freehold
- One Bedroom
- Patio
- Recently Refurbished
- Private Entrance
- Low Service Charges

Cheyne Walk, London, SW10



Lower Ground Floor

Total area (approx.): 53.6 sq. m (576.9 sq. ft)

Dexters

Chelsea and Belgravia
45 Sloane Avenue
London
SW3 3DH
Sales
020 7590 9510

Energy Rating: D. We aim to make our particulars both accurate and reliable. However they are not guaranteed; nor do they form part of an offer or contract. If you require clarification on any points then please contact us, especially if you're traveling some distance to view. Please note that appliances and heating systems have not been tested and therefore no warranties can be given as to their good working order.

 **RICS** | Regulated
Estate Agent
and Letting Agent

dexters.co.uk