



## Paradise Walk, SW3

### £2,850,000

An immaculately refurbished low built house located in an idyllic, historic part of Chelsea. This charming property boasts a large 24ft wide reception leading onto a manicured patio garden, with four large bedrooms and a secure parking space held on a separate lease.

The houses on Paradise Walk, or Bull Lane as it was previously called were built circa 1830. Quietly located away from the hustle and bustle, this street is ideally positioned near a number of great shops, restaurants, cafés, The Chelsea Physic Garden and Burton Court.

### Features

- Freehold
- Beautifully Refurbished
- Separate Garage
- Four Bedrooms
- Quiet Location
- Patio Garden & Balcony

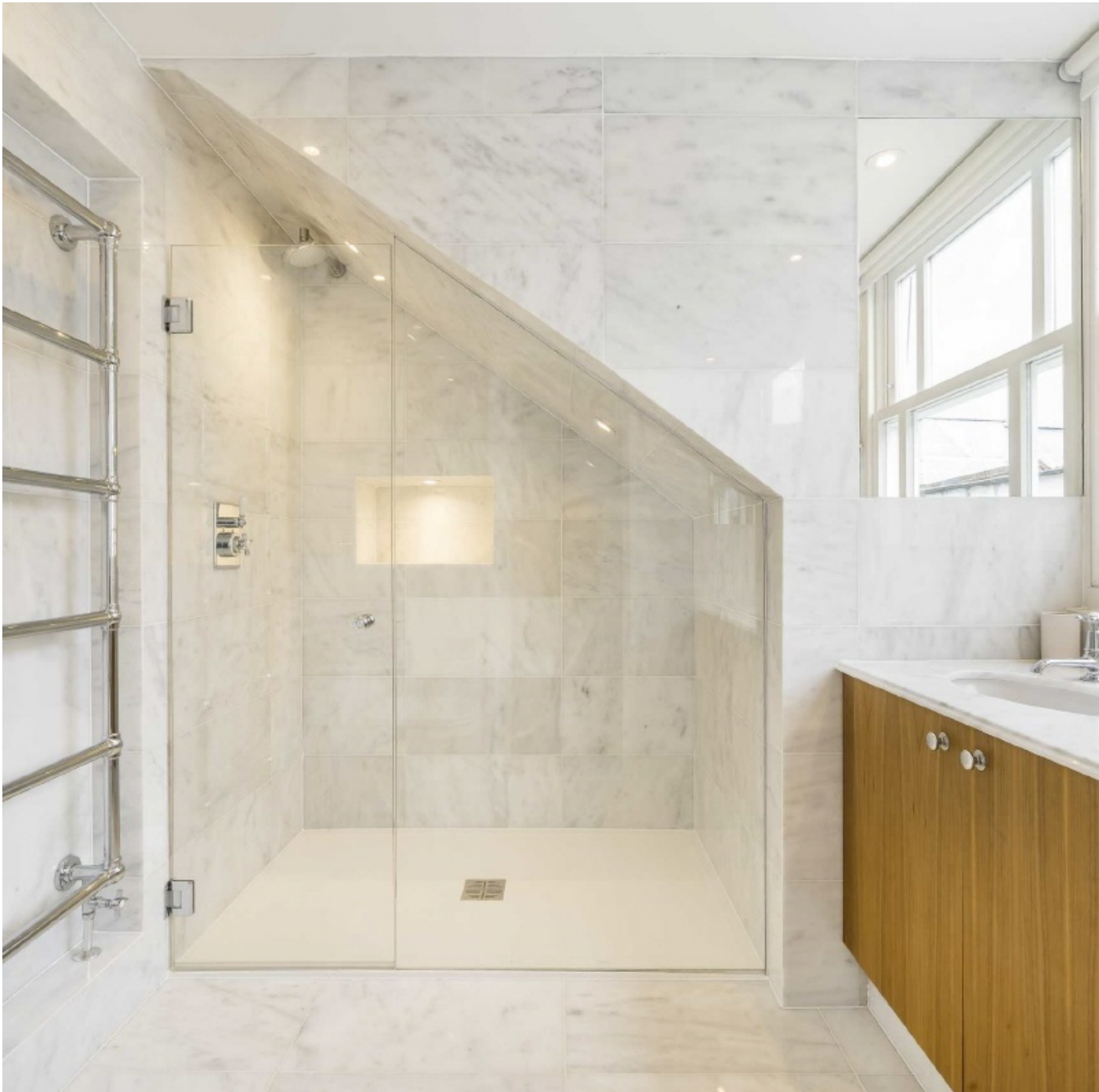


## Paradise Walk, SW3

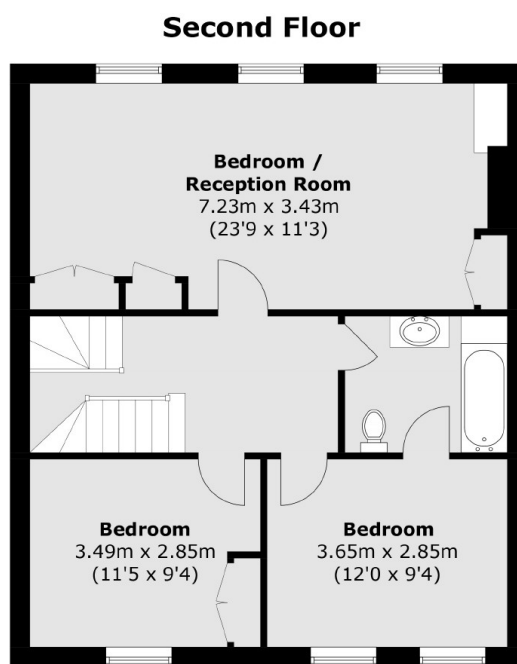
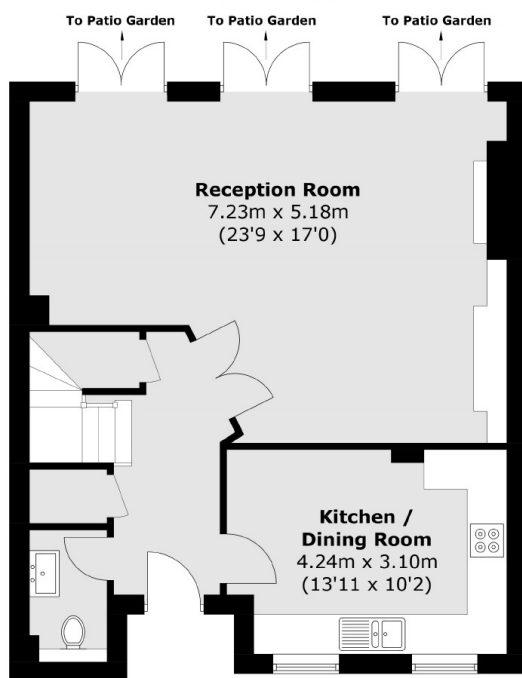
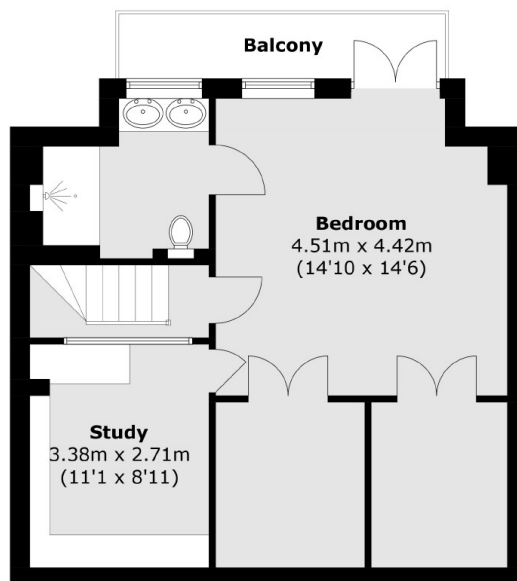
Spread over only three floors this property offers ideal family living. The ground floor comprises a large reception room that leads out to a patio garden, a separate cloakroom and a top of the range kitchen. Upstairs on the second floor are three large bedrooms with one bathroom.

Positioned at the top of the house is the principle bedroom (en-suite) that has plenty of built in storage space, a balcony and air conditioning. Of particular note is the separate parking space, entered on Dilke Street.





# Paradise Walk, London, SW3



Total area (approx.): 170.4 sq. m (1834.2 sq. ft)  
Balcony: 4.8 sq. m (51.7 sq. ft)

## Dexters

Chelsea and Belgravia  
45 Sloane Avenue  
London  
SW3 3DH  
Sales  
020 7590 9510

Energy Rating: C. We aim to make our particulars both accurate and reliable. However they are not guaranteed; nor do they form part of an offer or contract. If you require clarification on any points then please contact us, especially if you're traveling some distance to view. Please note that appliances and heating systems have not been tested and therefore no warranties can be given as to their good working order.

**RICS** Regulated  
Estate Agent  
and Letting Agent

dexters.co.uk