

Smith Street, SW3

£800,000

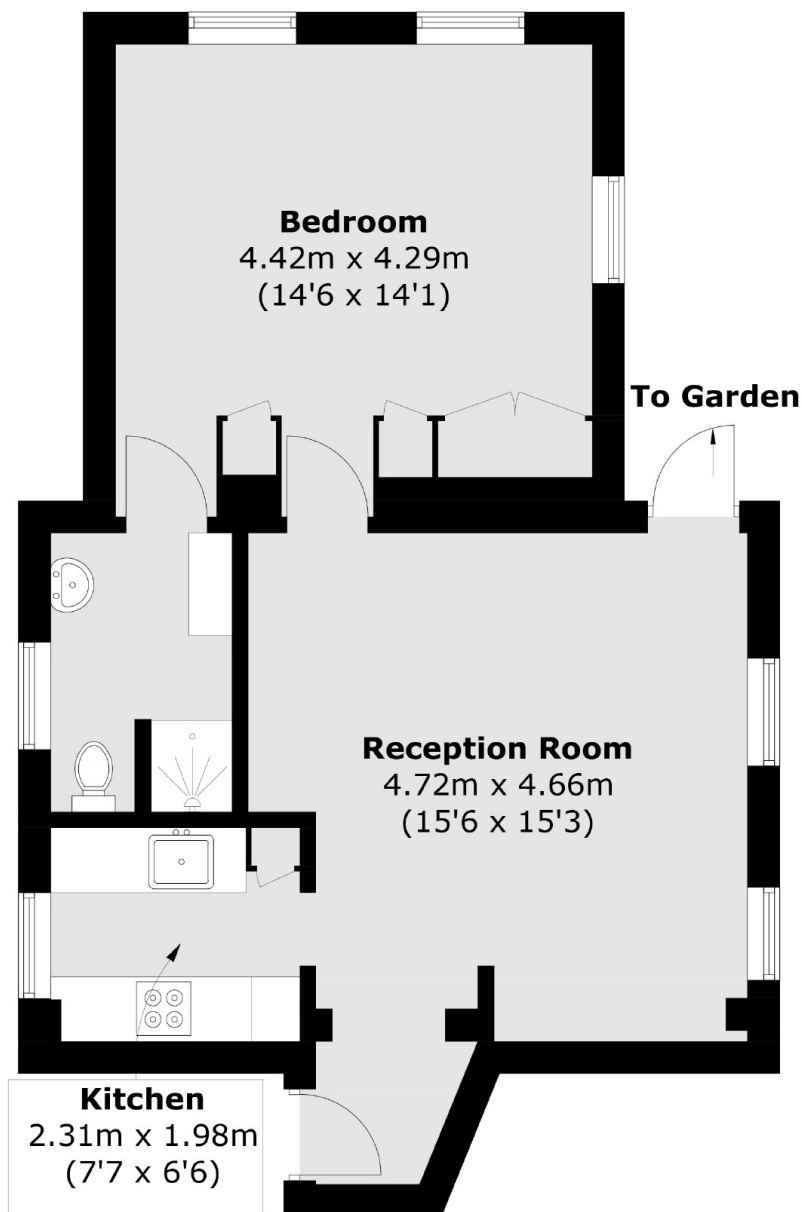
A bright one bedroom apartment with its own large private garden and air conditioning, ideally positioned South of the King's Road. This property is in great condition throughout and would work perfectly as a London pied-à-terre.

Smith Street is a popular address, ideally located South of the King's Road. Chelsea Green, Pavilion Road and Duke of York Square are all within easy walking distance.

Features

- Share of Freehold
- Air Conditioning
- Private Garden
- One Bedroom
- Ideal Rental Investment
- Popular Location

**Smith Street,
London, SW3**



Lower Ground Floor

Total area (approx.): 52.4 sq. m (564.0 sq. ft)

Dexters

Chelsea and Belgravia
45 Sloane Avenue
London
SW3 3DH
Sales
020 7590 9510

Energy Rating: . We aim to make our particulars both accurate and reliable. However they are not guaranteed; nor do they form part of an offer or contract. If you require clarification on any points then please contact us, especially if you're traveling some distance to view. Please note that appliances and heating systems have not been tested and therefore no warranties can be given as to their good working order.

 **RICS** | Regulated
Estate Agent
and Letting Agent

[dexters.co.uk](https://www.dexters.co.uk)