



Sloane Avenue, SW3

£279,000

A modern studio apartment located on the raised ground floor within a portered building. This well-arranged property would work perfectly as a rental investment or London base.

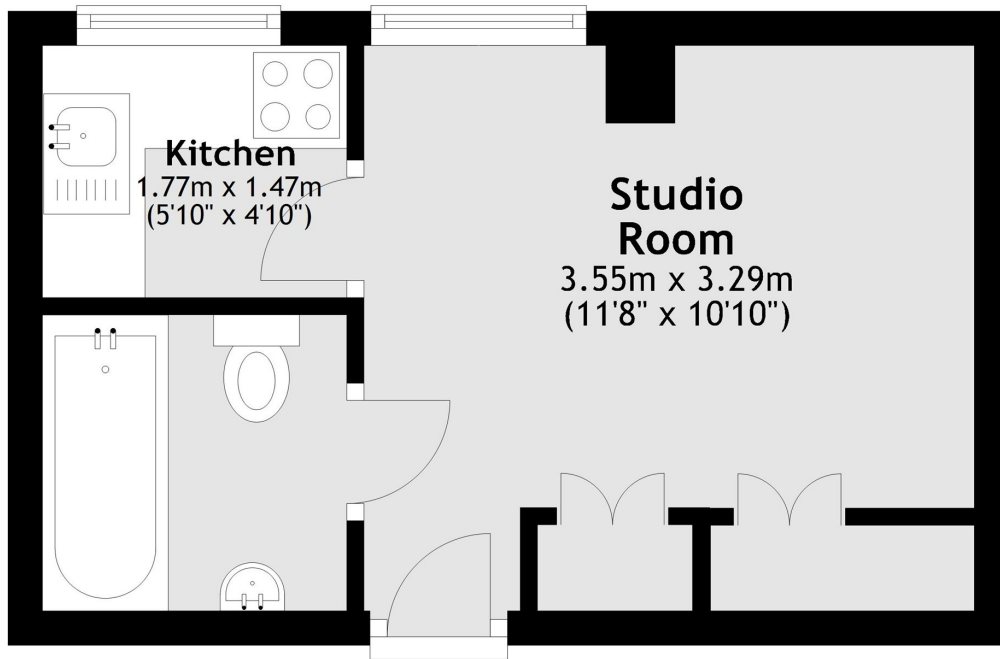
Chelsea Cloisters is located between Sloane Square and South Kensington tube stations. The world famous shops and restaurants the King's Road have to offer are also within walking distance.

Features

- Porter
- Studio Apartment
- Popular Location
- Ideal Rental Investment
- Leasehold
- Fantastic Condition

**Sloane Avenue,
London, SW3**

Ground Floor



Total area: approx. 17.8 sq. metres (191.9 sq. feet)