

Edith Terrace, SW10

£500 Per week

A lovely and bright two bedroom property within a purpose-built building. Located on a higher floor (with lift) this flat is flooded with natural light and benefits from plenty of storage.

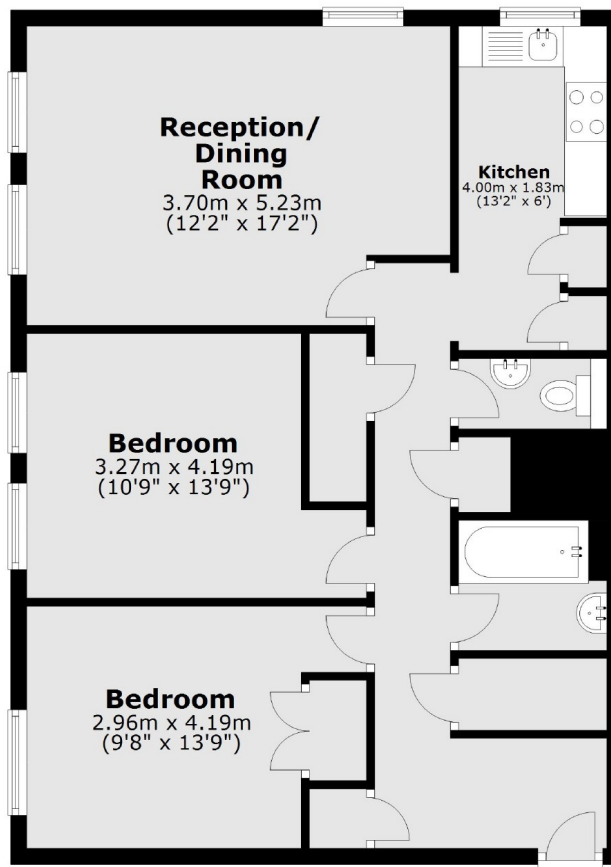
Nevill Court is a well maintained building on Edith Terrace close to the boutiques, restaurants and transport links of both the Fulham Road and Kings Road.

Features

Two Bedroom
One Bathroom
Separate Kitchen
Wood Floors
Built In Storage
Lift

Edith Terrace, London, SW10

Third Floor



Total area: approx. 72.7 sq. metres (782.6 sq. feet)