



Chelsea Manor Gardens, SW3

£842 Per week

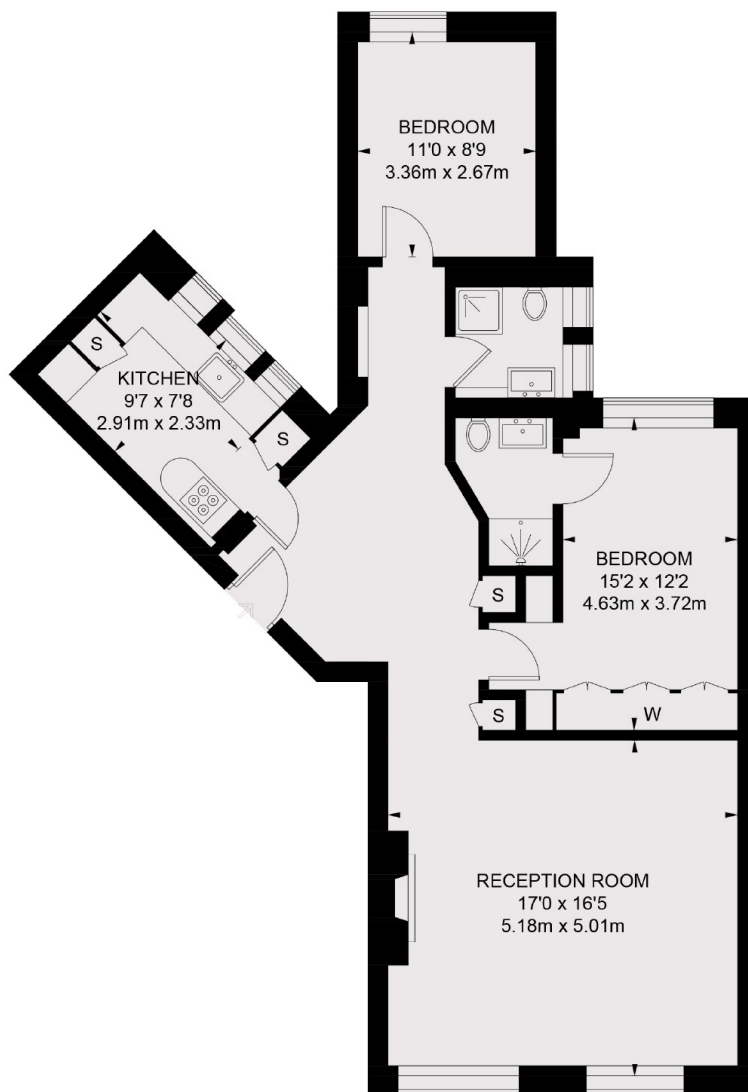
A contemporary two bedroom, two bathroom apartment to let in the heart of Chelsea. The property has been repainted throughout and offers an outstanding amount of natural light throughout being top floor.

Kings Court South is located just off Kings Road with fantastic access to all the local amenities of shops, bars and restaurants of the local area.

Features

- Two Double Bedrooms
- Two Bathrooms
- Fifth Floor
- Lift Access
- Caretaker
- Communal Courtyard

Chelsea Manor Gardens, London, SW3



FIFTH FLOOR

TOTAL APPROX. FLOOR AREA 874 SQ. FT. (81.2 SQ. M.)