

Draycott Place, SW3

£725 Per week

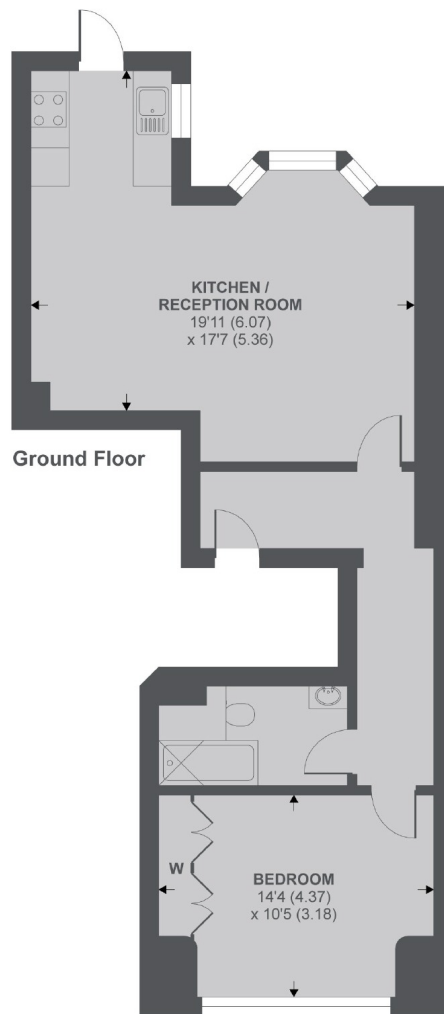
An amazing one bedroom flat on the raised ground floor of a red brick period building. Private garden access, high ceilings and wood flooring throughout make this a must see flat.

Between Sloane Avenue and Kings Road in the heart of Chelsea. Close to the many shops, bars and restaurants of Kings Road and Sloane Square.

Features

- One Bedroom
- Raised Ground Floor
- Wood Flooring
- High Ceilings
- Private Patio
- Open Plan Kitchen

Draycott Place, London, SW3



Draycott Place SW3

APPROX FLOOR AREA 600 SQ.FT 55.7 SQ.M

Copyright nichecom.co.uk 2018 REF : 299162

Contact

To arrange a viewing call our office on the number below or visit our website.



Energy Rating: D. We aim to make our particulars both accurate and reliable. However they are not guaranteed; nor do they form part of an offer or contract. If you require clarification on any points then please contact us, especially if you're traveling some distance to view. Please note that appliances and heating systems have not been tested and therefore no warranties can be given as to their good working order.