



Grosvenor Gardens, SW1W

£1,269 Per week

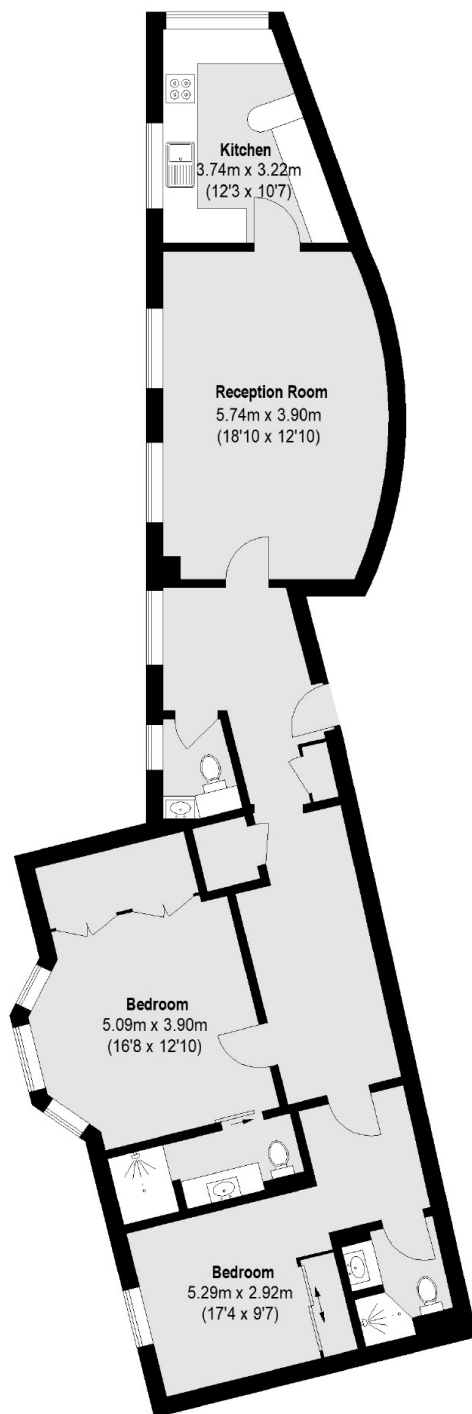
A newly refurbished two bedroom two bathroom flat on the second floor of a grand white stucco building with lift, overlooking the gardens of Buckingham Palace.

Grosvenor Gardens runs from Grosvenor Place to Buckingham Palace Road and is conveniently located for Victoria station. Steeped in history, the area is home to many beautiful listed buildings in addition to the enchanting and well-maintained parks.

Features

Newly Refurbished
Lift Access
Two Bedroom
Two Bathroom
Guest WC
Second Floor

Grosvenor Gardens, London, SW1W



Total area (approx.): 95.64 sq. m (1029 sq. ft)

Dexters

Chelsea and Belgravia
45 Sloane Avenue
London
SW3 3DH
Lettings
020 7590 9500

Energy Rating: E. We aim to make our particulars both accurate and reliable. However they are not guaranteed; nor do they form part of an offer or contract. If you require clarification on any points then please contact us, especially if you're traveling some distance to view. Please note that appliances and heating systems have not been tested and therefore no warranties can be given as to their good working order.

 **RICS** | Regulated
Estate Agent
and Letting Agent

[dexters.co.uk](https://www.dexters.co.uk)