



## Glenthorne Road, W6

£775,000

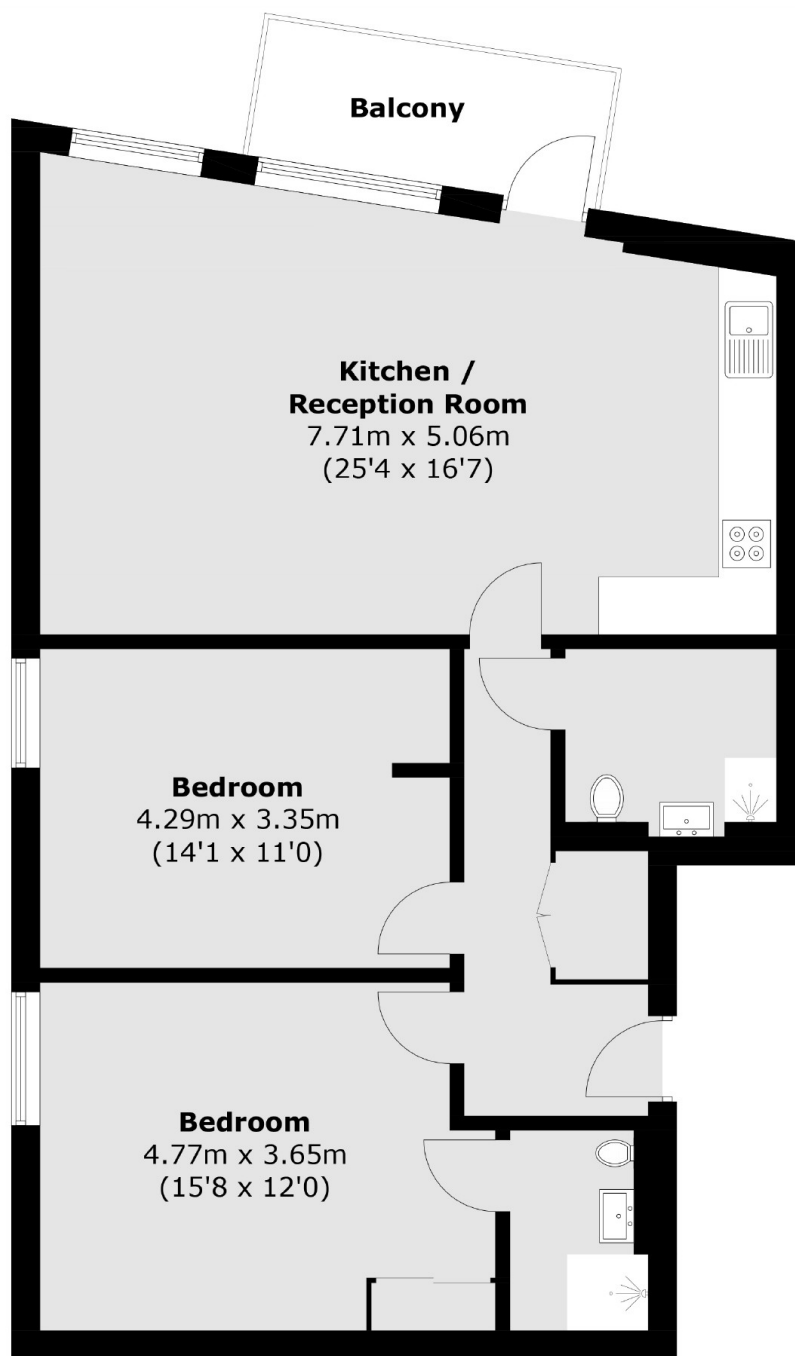
These state of the art, high-spec apartments are generously proportioned and designed to offer the best of modern living while being centrally located for the best that Hammersmith has to offer.

Hammersmith is one of the capital's most vibrant neighbourhoods, with a real sense of community and a thriving business heart. A great place to live and work, it also offers fast, easy access to the rest of the capital.

### Features

- High-Spec Apartments
- Long Leases
- Concierge
- Communal Roof Terrace
- Private Outside Space
- Chain Free

# Glenthorne Road, London, W6



Total area (approx.): 84.0 sq. m (904.2 sq. ft)  
Balcony area (approx.): 5.3 sq. m (57.0 sq. ft)