



Weltje Road, W6

£400,000

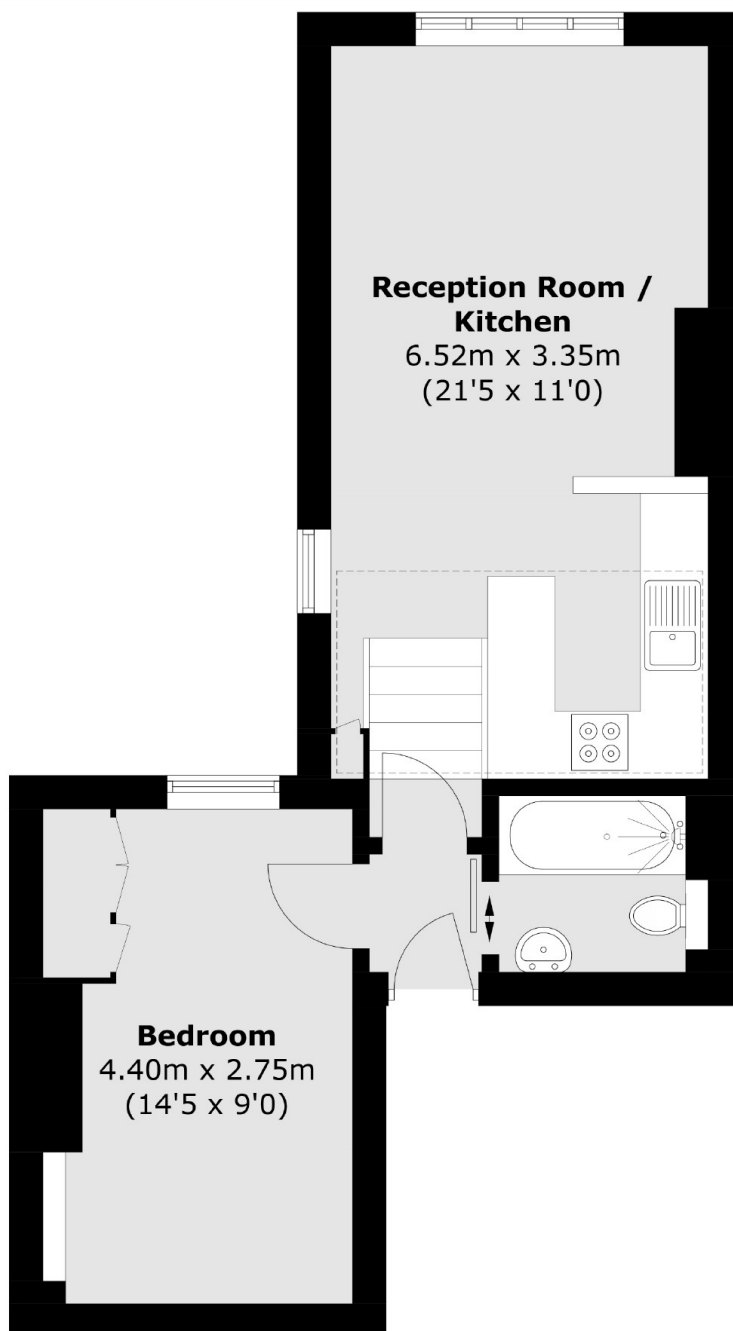
This charming one bedroom period conversion is ideally located on Weltje Road. The flat has incredible natural light coming in through the expansive skylights above the kitchen with a south west facing aspect.

Weltje Road is moments away from the River, Hammersmith Bridge and the amenities that both King Street and Chiswick High Road have to offer.

Features

- One Bedroom
- Skylight
- Share of Freehold
- Period Conversion
- Close To Amenities
- Close To Transport

Weltje Road, London, W6



Total area (approx.): 39.5 sq. m (425.1 sq. ft)

Dexters

Hammersmith
164-166 King Street
London
W6 0QU
Sales
020 8939 6061

Energy Rating: E. We aim to make our particulars both accurate and reliable. However they are not guaranteed; nor do they form part of an offer or contract. If you require clarification on any points then please contact us, especially if you're traveling some distance to view. Please note that appliances and heating systems have not been tested and therefore no warranties can be given as to their good working order.

 **RICS** | Regulated
Estate Agent
and Letting Agent

[dexters.co.uk](https://www.dexters.co.uk)