

Glenthorne Road, W6

£895,000

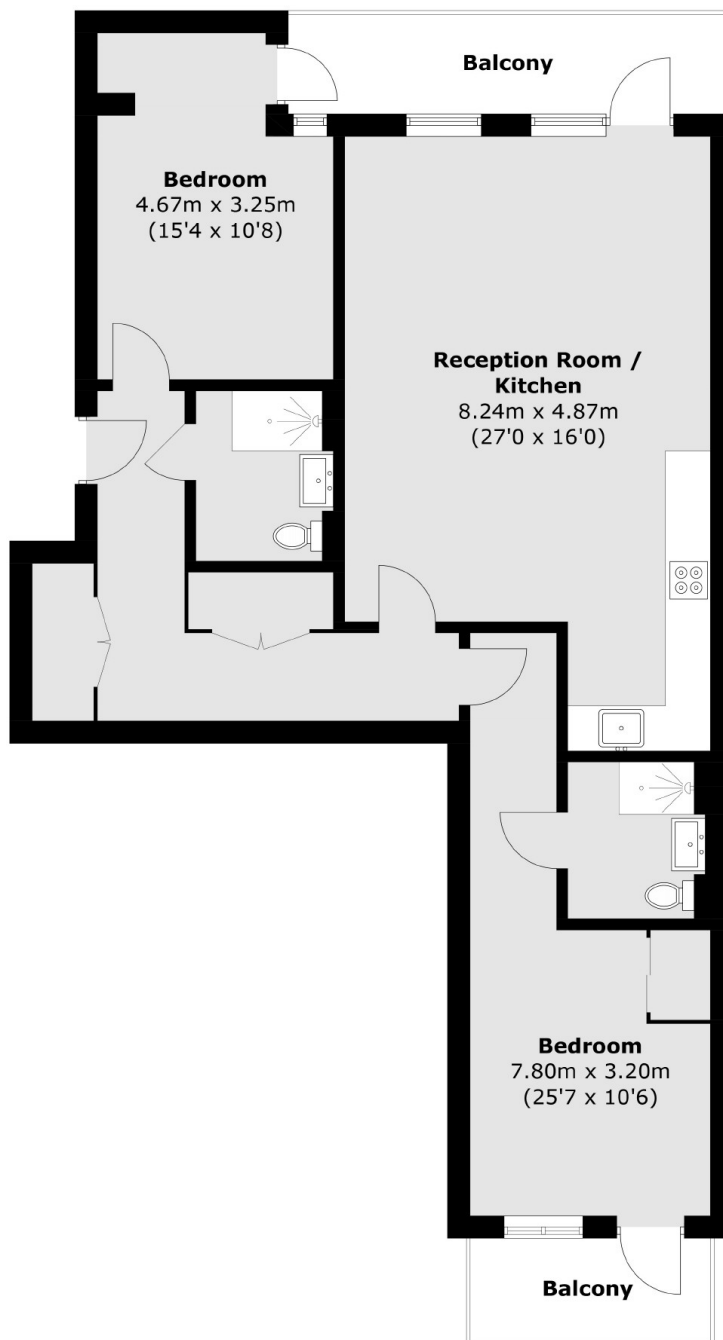
Hammersmith is one of the capital's most vibrant neighbourhoods, with a real sense of community and a thriving business heart. A great place to live and work, it also offers fast, easy access to the rest of the capital.

Hammersmith is one of the capital's most vibrant neighbourhoods, with a real sense of community and a thriving business heart. A great place to live and work, it also offers fast, easy access to the rest of the capital.

Features

- High-Spec Apartments
- Long Leases
- Concierge
- Communal Roof Terrace
- Private Outside Space
- Chain Free

Glenthorne Road, London, W6



Total area (approx.): 90.1 sq. m (969.8 sq. ft)
Balcony: 12.2 sq. m (131.3 sq. ft)

Dexters

Hammersmith
164-166 King Street
London
W6 0QU
Sales
020 8939 6061

Energy Rating: B. We aim to make our particulars both accurate and reliable. However they are not guaranteed; nor do they form part of an offer or contract. If you require clarification on any points then please contact us, especially if you're traveling some distance to view. Please note that appliances and heating systems have not been tested and therefore no warranties can be given as to their good working order.

 **RICS** | Regulated
Estate Agent
and Letting Agent

[dexters.co.uk](https://www.dexters.co.uk)