



Glenthorne Road, W6

£825,000

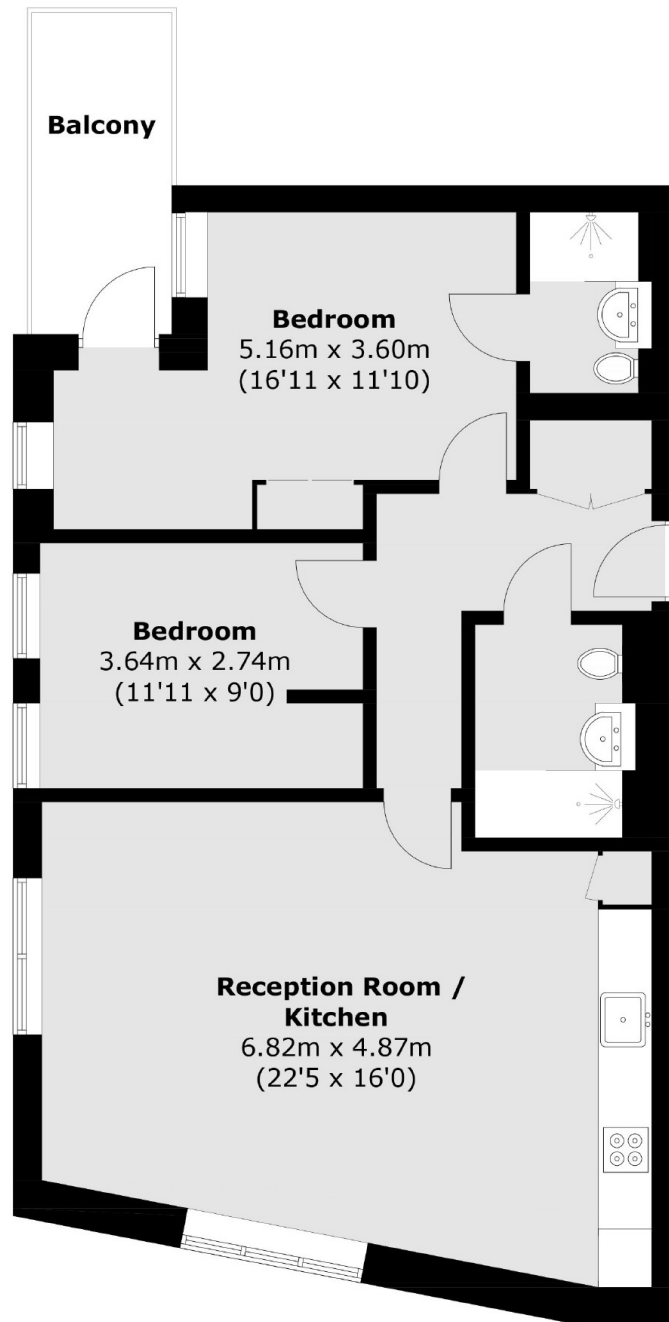
Generously proportioned and designed to offer the best of modern living while being centrally located for the best that Hammersmith has to offer, is this state of the art, high-spec two bedroom, two bathroom apartment.

Offering easy access to the rest of the capital, the apartment is located on one of Hammersmith's most vibrant neighbourhoods, with a real sense of community, the property is just a short-walk away from Hammersmith Station as well.

Features

- High-Spec Apartments
- Long Leases
- Concierge
- Communal Roof Terrace
- Private Outside Space
- Chain Free

Glenthorne Road, London, W6



Fourth Floor

Total area (approx.): 76.5 sq. m (823.4 sq. ft)
Balcony: 5.6 sq. m (60.2 sq. ft)

Dexters

Hammersmith
164-166 King Street
London
W6 0QU
Sales
020 8939 6061

Energy Rating: . We aim to make our particulars both accurate and reliable. However they are not guaranteed; nor do they form part of an offer or contract. If you require clarification on any points then please contact us, especially if you're traveling some distance to view. Please note that appliances and heating systems have not been tested and therefore no warranties can be given as to their good working order.

 **RICS** | Regulated
Estate Agent
and Letting Agent

dexters.co.uk