



## Greyhound Road, W6

£435,000

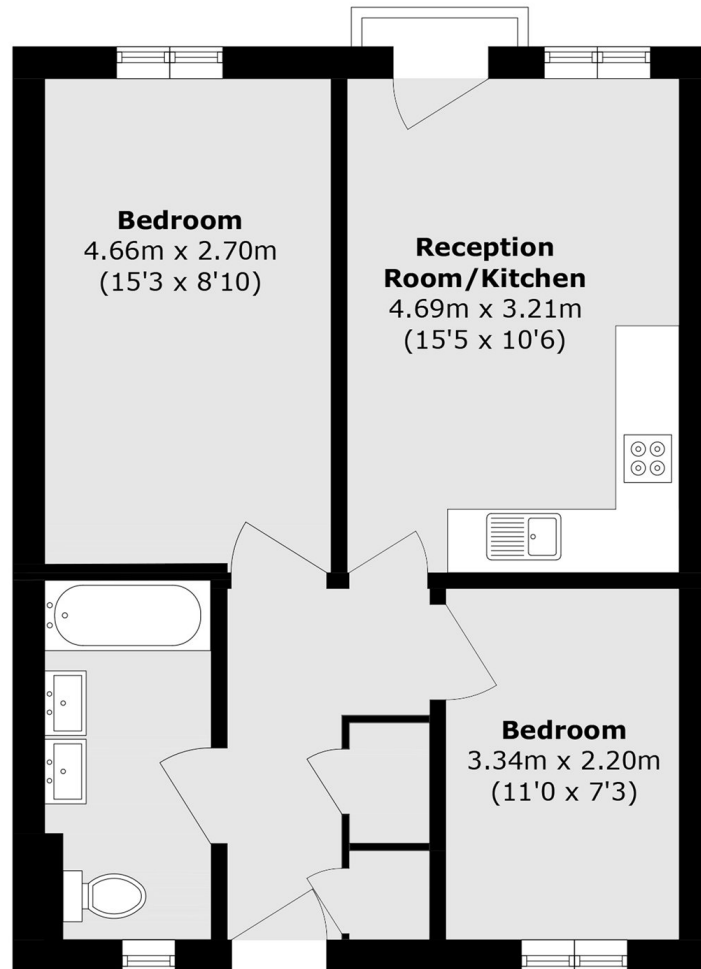
A modern two bedroom apartment situated in a unique purpose built development. The property has been tastefully refurbished by the current owner and is immaculate throughout.

Greyhound Road is in a popular location for the extensive amenities of Fulham, Hammersmith and Earls Court and is also within easy reach of the Thames and its array of riverside pubs and eateries.

### Features

Leasehold  
Two Bedrooms  
Great Location  
Close To Shops  
Ideal Home  
Juliet Balcony

# Greyhound Road, London, W6



Total area (approx.): 48.5 sq. m (552.0 sq. ft)

## Dexters

Hammersmith  
164-166 King Street  
London  
W6 0QU  
Sales  
020 8939 6061

Energy Rating: C. We aim to make our particulars both accurate and reliable. However they are not guaranteed; nor do they form part of an offer or contract. If you require clarification on any points then please contact us, especially if you're traveling some distance to view. Please note that appliances and heating systems have not been tested and therefore no warranties can be given as to their good working order.

 **RICS** | Regulated  
Estate Agent  
and Letting Agent

[dexters.co.uk](https://www.dexters.co.uk)