

## Hammersmith Grove, W6

£692 Per week

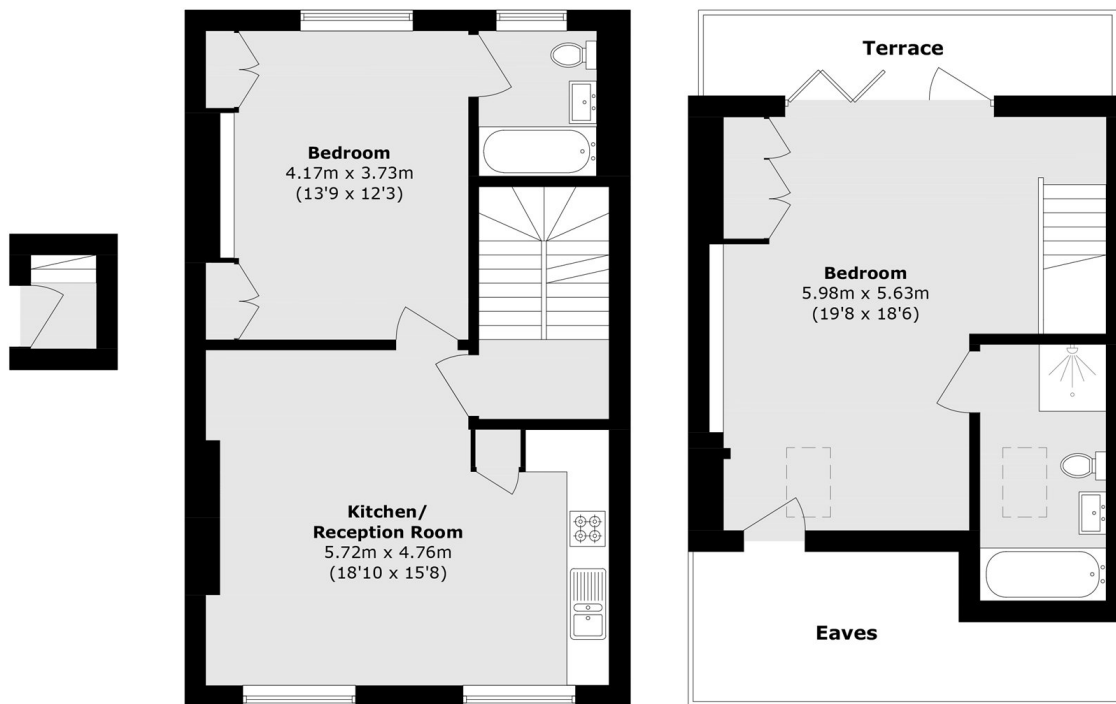
Located in the highly sought after Brackenbury Village, this bright two bedroom, two bathroom flat is arranged over two floors and has a large private terrace. The property features a bright open-plan kitchen and living area, as well as two en-suite bedrooms. Upstairs, there is a master suite complete with an en-suite bathroom and direct access to a private roof terrace.

This property is a short walk from Hammersmith Station (District, Piccadilly, Hammersmith & City, and Circle lines), and surrounded by an excellent selection of cafés, restaurants, and local shops.

### Features

- Two En-Suite Bedrooms
- Private Terrace
- Split-Level Layout
- Open Plan
- Brackenbury Village
- Hammersmith Station

# Hammersmith Grove, London, W6



**First Floor**

**Second Floor**

**Third Floor**

Total area (approx.): 89.2 sq. m (960.3 sq. ft)

Terrace (approx.): 6.7 sq. m (71.8 sq. ft)