



Queen Caroline Street, W6

£807 Per week

Situated in a mansion block close to the River, this spacious newly re-decorated four bedroom, two bathroom flat offers comfortable living space in a highly convenient location. The property includes a bright eat-in kitchen, four good sized bedrooms and a small private balcony.

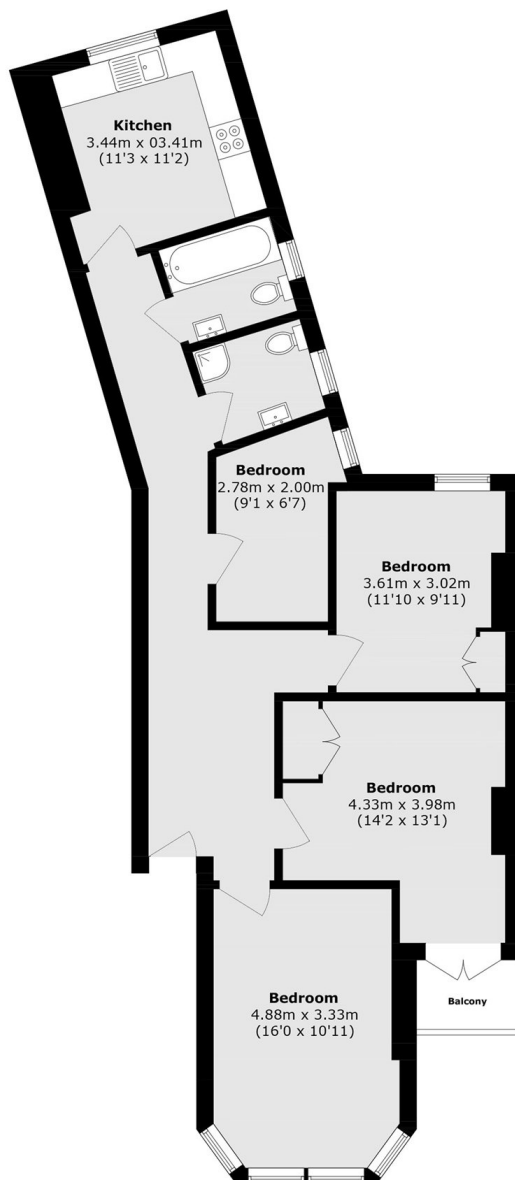
Queen Caroline Street is within a couple of minutes walk from Hammersmith Station and from The River Thames/ Hammersmith Bridge, making it ideally located for the many amenities offered by Hammersmith Broadway, excellent transport links, including to the A4/M4 and riverside living.

Features

Four Bedrooms
Two Bathrooms

Private Balcony
Mansion Block
Close to the River Thames

Queen Caroline Street, London, W6



Total area (approx.): 90.3 sq. m (971.9 sq. ft)

Balcony area (approx.): 1.3 sq. m (13.9 sq. ft)