



Goldhawk Road, W6

£692 Per week

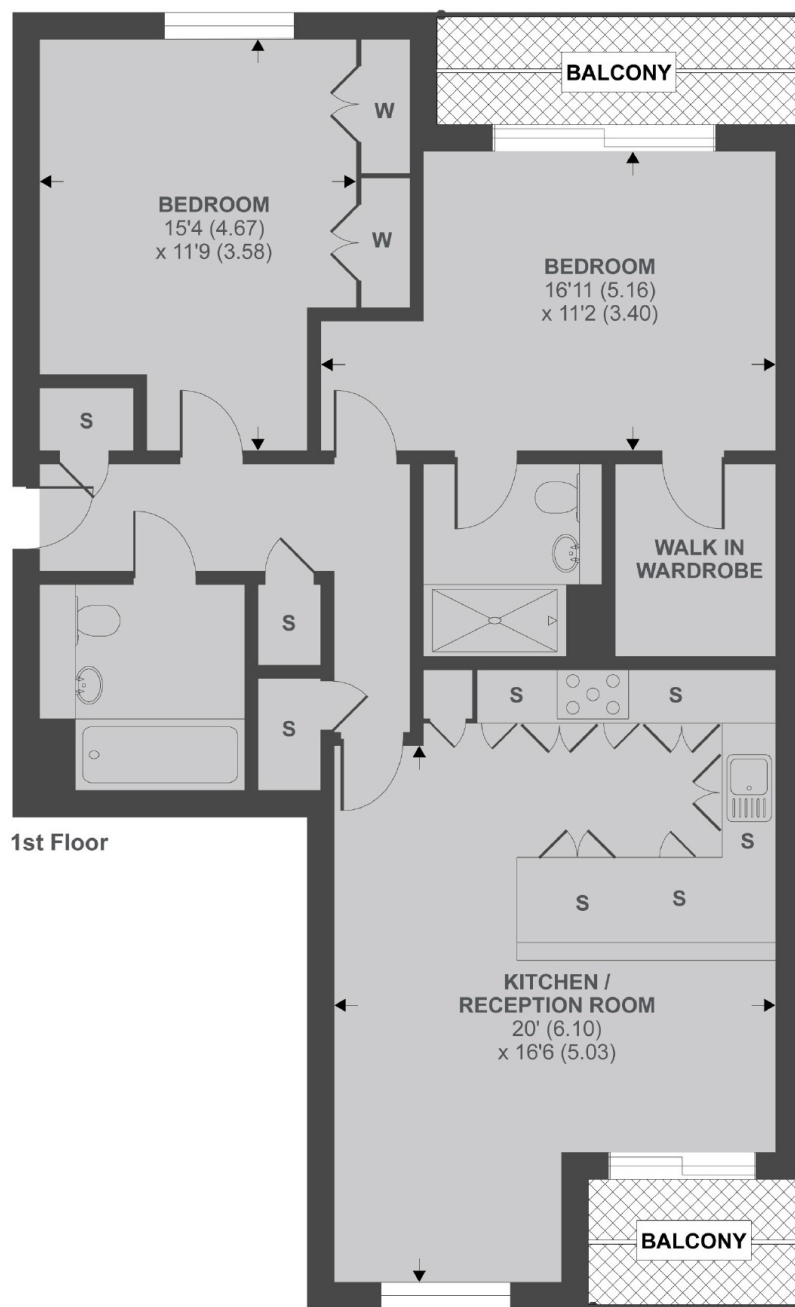
This two bedroom first floor apartment comprises a bright and spacious open plan reception room, wooden floors, a private balcony and a modern fitted kitchen with granite worktops. A large master bedroom with walk in wardrobe and en-suite bathroom leads out to a private balcony. The flat also offers a large second double bedroom with fitted wardrobes and a family bathroom with shower over bath. The Vitae development further benefits from allocated parking behind secure electronic gates.

Located 5 minutes walk from Stamford Brook tube station and 10 minutes walk from Ravenscourt Park tube station, offering excellent access into Central London.

Features

- Secure Gated Development
- Allocated Parking
- Two Double Bedrooms
- Open Plan Kitchen/Reception
- Two Bathrooms
- Two Balconies
- Communal Gardens

Goldhawk Road, London, W6



Goldhawk Road, W6

APPROX FLOOR AREA 973 SQ.FT 90.4 SQ.M

Copyright nichecom.co.uk 2019 REF : 459526

Dexters

Hammersmith
164-166 King Street
London
W6 0QU
Lettings
020 8939 6062

Energy Rating: B. We aim to make our particulars both accurate and reliable. However they are not guaranteed; nor do they form part of an offer or contract. If you require clarification on any points then please contact us, especially if you're traveling some distance to view. Please note that appliances and heating systems have not been tested and therefore no warranties can be given as to their good working order.

RICS Regulated
Estate Agent
and Letting Agent

dexters.co.uk