



## Boileau Road, SW13

### £350,000

A beautiful flat situated in a sought after location, close to Hammersmith and Barnes village. The property is finished to an immaculate standard and benefits from a spacious living room and modern kitchen. A bedroom with a walk-in wardrobe, and a well-appointed bathroom completes the property.

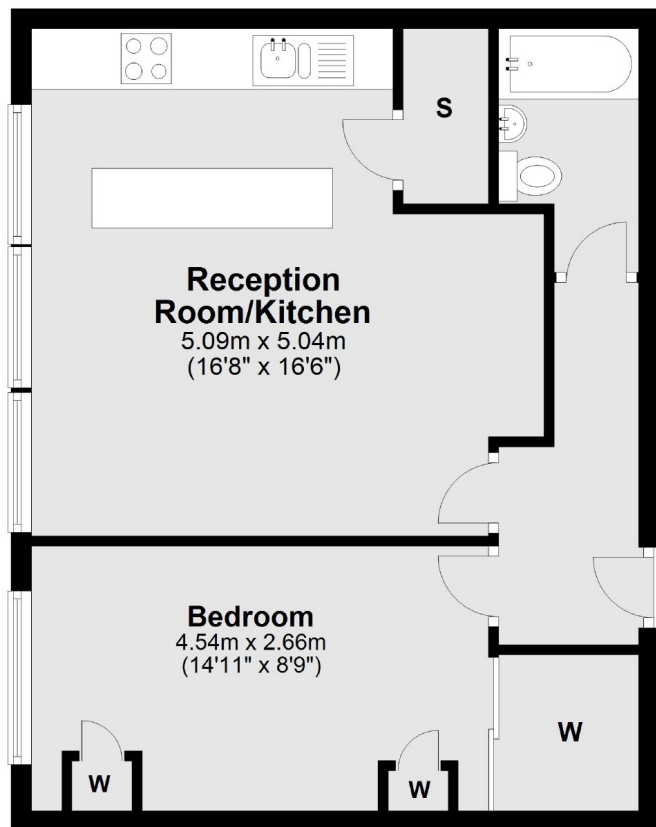
Residents benefit from communal gardens and private parking. Boileau Road, just off Lonsdale Road, is a quiet location, but perfectly situated for easy access to Hammersmith and Barnes.

### Features

- One Double Bedroom
- Open Plan Kitchen
- Ample Storage
- Popular Location
- Barnes Station

**Boileau Road,  
London, SW13**

**Second Floor**



Total area: approx. 46.9 sq. metres (504.3 sq. feet)

**Dexters**

Hammersmith  
164-166 King Street  
London  
W6 0QU  
Sales  
020 8939 6061

Energy Rating: D. We aim to make our particulars both accurate and reliable. However they are not guaranteed; nor do they form part of an offer or contract. If you require clarification on any points then please contact us, especially if you're traveling some distance to view. Please note that appliances and heating systems have not been tested and therefore no warranties can be given as to their good working order.

 **RICS** | Regulated  
Estate Agent  
and Letting Agent

[dexters.co.uk](https://www.dexters.co.uk)