



Boileau Road, SW13

£350,000

A beautiful flat situated in a sought after location, close to Hammersmith and Barnes village. The property is finished to an immaculate standard and benefits from a spacious living room and modern kitchen. A bedroom with a walk-in wardrobe, and a well-appointed bathroom completes the property.

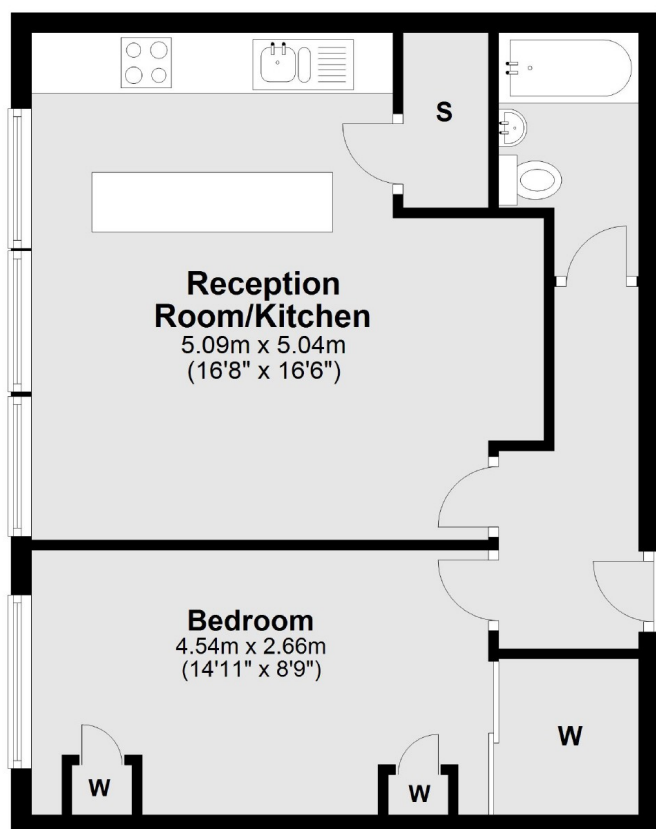
Residents benefit from communal gardens and private parking. Boileau Road, just off Lonsdale Road, is a quiet location, but perfectly situated for easy access to Hammersmith and Barnes.

Features

- One Double Bedroom
- Open Plan Kitchen
- Ample Storage
- Popular Location
- Barnes Station
- Chain Free

**Boileau Road,
London, SW13**

Second Floor



Total area: approx. 46.9 sq. metres (504.3 sq. feet)