

Agate Road
Hammersmith, W6

Dexters



About the property

This impressive house is located in Brackenbury Village, spanning over 2,900 sq. ft and has been thoughtfully redesigned and renovated to a high standard. Additionally, there is underfloor heating on the ground floor and a good-sized cellar. The ground floor offers a uniquely designed, flowing living space.

The high-specification kitchen and central island benefit from a west facing bay window, leading to a central dining room with Crittall style doors. The living and entertaining space at the rear opens onto a well-maintained garden.

The principal bedroom is on the first floor and has an impressive walk-in dressing room and en suite. A further bedroom or home office is on the half landing.

The second floor features a modern four piece family bathroom and a sprawling, full-width room currently used as an informal reception, alongside another double bedroom as well as access to a large roof terrace. The upper floor has a large bedroom and en suite shower.

Key features

- Five Bedrooms
- Three Bathrooms
- Large Principal Suite
- Rarely Seen Design
- Over 2,900 Sq. Ft
- Fully Renovated & Re-Configured

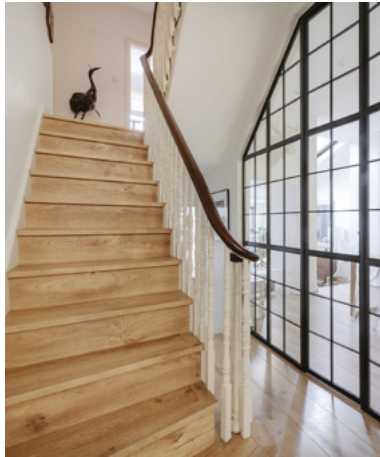






APPROX. GROSS INTERNAL AREA 2,766 SQ. FT (256 SQ. M)
 EAVES 139 SQ. FT (12.9 SQ. M)
 APPROX. TOTAL 2,905 SQ. FT (269.9 SQ. M)

Energy Rating: C. We aim to make our particulars both accurate and reliable. However they are not guaranteed; nor do they form part of an offer or contract. If you require clarification on any points then please contact us, especially if you're traveling some distance to view. Please note that appliances and heating systems have not been tested and therefore no warranties can be given as to their good working order.



Dexters Hammersmith
164 King Street
London, W6 0QU
020 8939 6061

Dexters