



## Goldhawk Road, W6

### £465,000

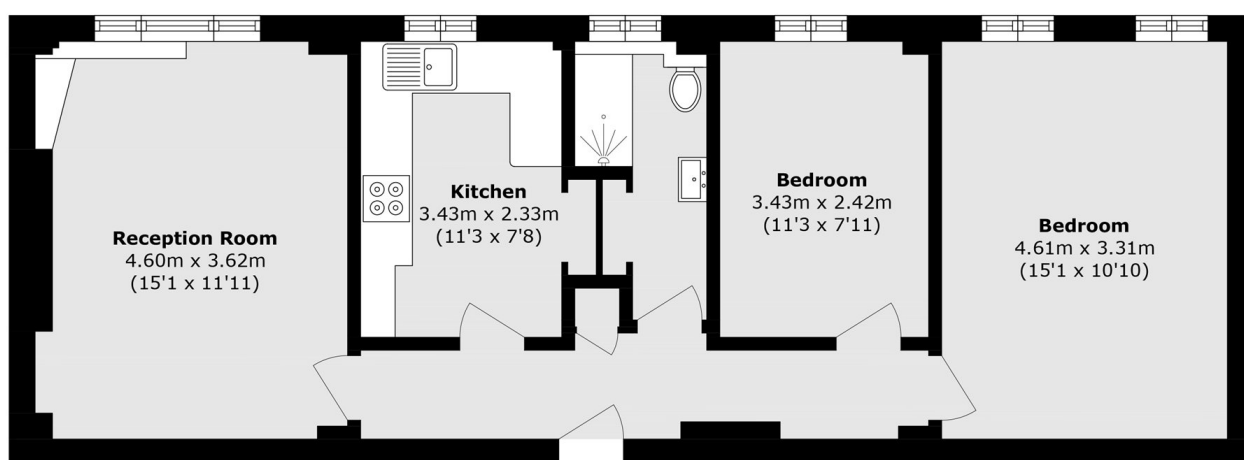
This well presented and spacious two bedroom purpose built flat is located moments from Stamford Brook Station & Ravenscourt Park, benefiting from private parking, communal grounds and offered chain free.

Ideally Positioned moments from Stamford Brook Station, Ravenscourt Park aswell as the array of amenities on King Street & Chiswick High Road as well as being a short distance from the River Thames with its riverside walks and pubs.

### Features

- Two Bedrooms
- First Floor
- Well Maintained
- Private Parking
- Close To Transport
- Chain Free

# Goldhawk Road, London, W6



Total area (approx.): 63.6 sq. m (684.5 sq. ft)