



## Weltje Road, W6

£646 Per week

This is a modern three bedroom flat arranged over two floors, close to the River in Hammersmith. There are two en-suite bedrooms and a separate guest WC. Upstairs, there is a bright and spacious open-plan living room and kitchen. This property is finished to a high standard throughout.

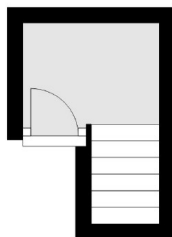
Next to the River Thames and the amenities of King Street very close by, Hammersmith Broadway and Ravenscourt Park tube are also within easy reach.

### Features

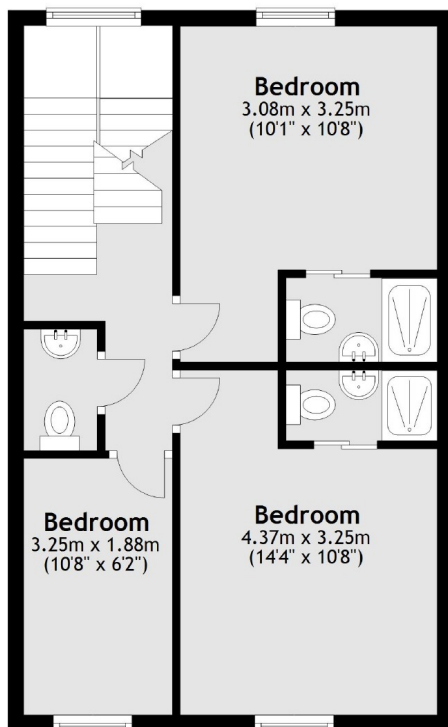
- Three Bedrooms
- Two En-Suite Bathrooms
- Separate WC
- Period Conversion
- Close to River Thames
- Modern Throughout

# Weltje Road, London, W6

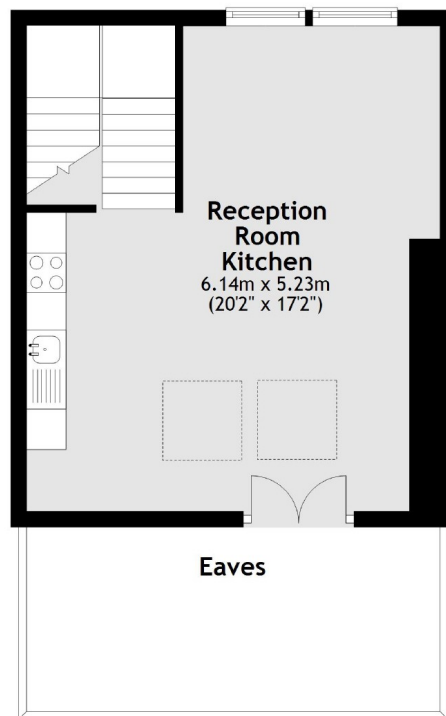
First Floor



First Floor



Second Floor



Total area: approx. 81.9 sq. metres (881.0 sq. feet)