



Crisp Road, W6

£1,350,000

A recently built, luxury two bedroom, two bathroom apartment with river views next to Hammersmith Bridge, benefiting from state of the art finishes, roof terrace, two lots of communal gardens and a concierge.

Queens Wharf residents benefit from a 24-hour dedicated concierge, a rooftop terrace, and an on-site restaurant, bar and café.. Hammersmith station is a short walk away.

Features

- Two Bedrooms
- Two Bathrooms
- Two Balconies
- River Views
- 24 hour Concierge
- Roof Terrace

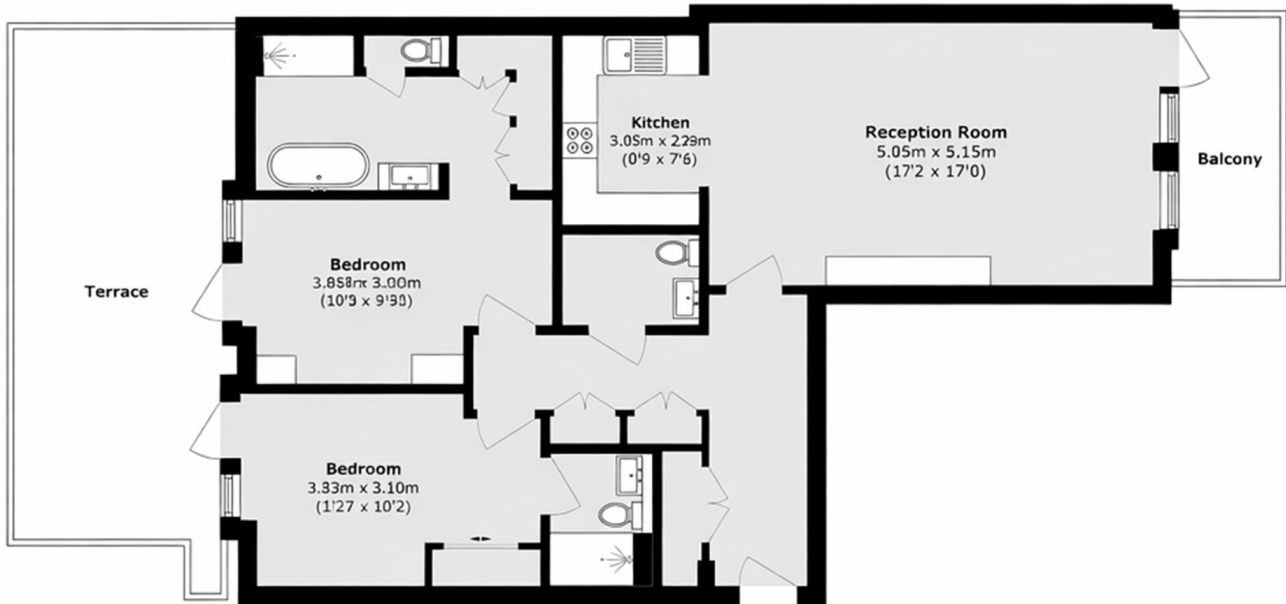


Crisp Road, W6

This two bed, two bath apartment is located on the fourth floor and has been finished to an excellent standard. The flat has a large open plan kitchen/reception room which benefits from east facing river views, two double bedrooms, the master with an ensuite bathroom with built in storage and access to a large 282 sq ft terrace overlooking the communal roof gardens, the second bedroom also benefits from built in wardrobes as well as access to the terrace, there is also an additional W.C alongside the two bathrooms.



Crisp Road, London, W6



Total area (approx.): 111.48 sq. m (1200 sq. ft)

Balcony area (approx.): 6.56 sq. m (70.6 sq. ft)

Terrace area (approx.): 26.2 sq. m (282.0 sq. ft)