



Lillian Road, SW13

£750 Per week

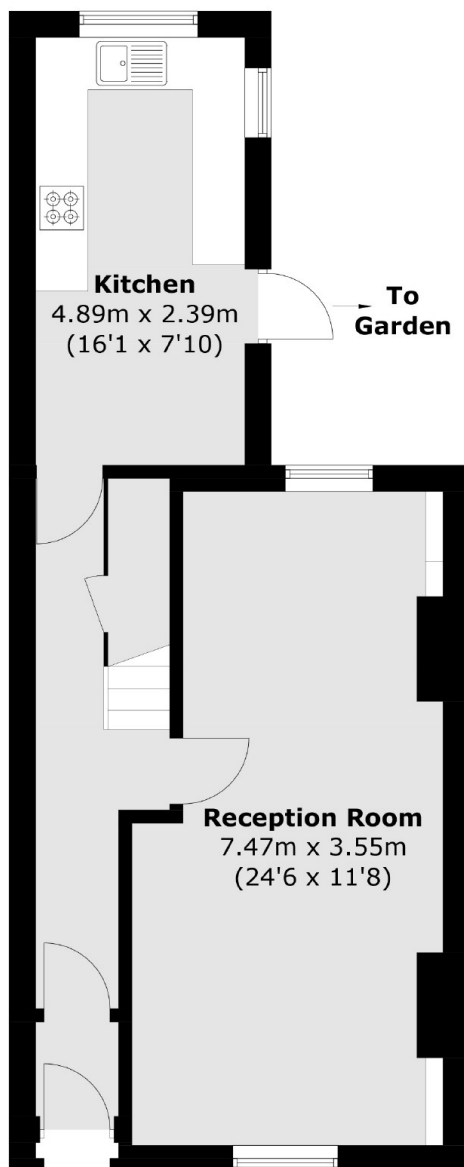
A well presented two bedroom house available in the sought after Barnes area. The house which has been newly redecorated throughout has a large reception room, separate eat-in kitchen, spacious private garden and two double bedrooms, of which the master has a significant amount of built-in storage. The house is fitted with a modern family bathroom. This would make the ideal home for a couple or a family.

Lillian Road is located near Castelnau and within close proximity to the River Thames and Hammersmith Bridge, with easy access to Hammersmith.

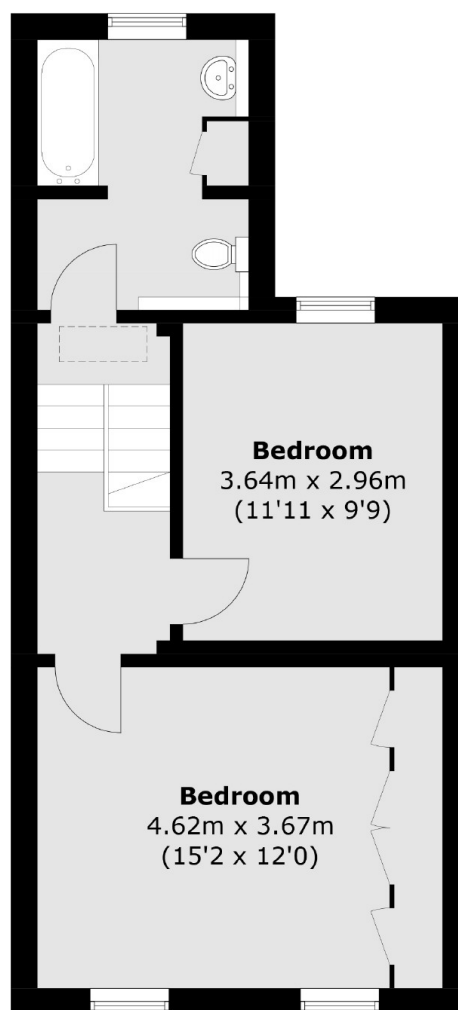
Features

Two Bedroom House
Private Garden
Newly Redecorated
Hard Flooring
Eat In Kitchen
Hammersmith Bridge

Lillian Road, London, SW13



Ground Floor



First Floor

Total area (approx.): 89.9 sq. m (967.7 sq. ft)