



Shirland Road, W9

£507 Per week

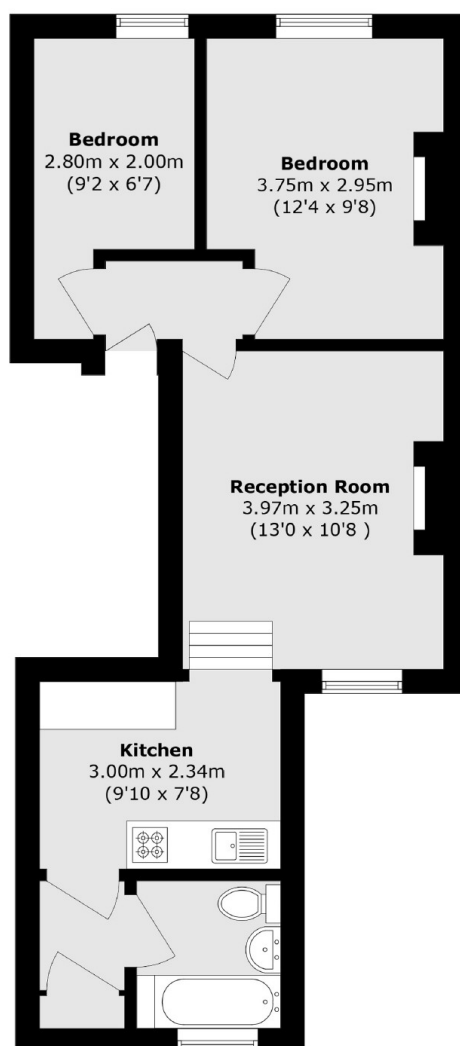
This two bedroom property is located on first floor flat and has spacious reception room leading down to a separate modern kitchen, two double bedrooms and a bathroom.

Shirland Road is ideally situated with easy access to both Queens Park and Westbourne Park tube stations as well as the local cafés, shops on Salusbury Road.

Features

- Two Bedrooms
- Modern Interiors
- Separate Kitchen
- Furnished
- Period Conversion
- Great Location

Shirland Road, Maida Vale, W9



Total area (approx.): 45.8 sq. m (493.0 sq. ft)

Dexters

Maida Vale
298 Elgin Avenue
London
W9 1JS
Sales
020 7266 2020

Energy Rating: C. We aim to make our particulars both accurate and reliable. However they are not guaranteed; nor do they form part of an offer or contract. If you require clarification on any points then please contact us, especially if you're traveling some distance to view. Please note that appliances and heating systems have not been tested and therefore no warranties can be given as to their good working order.

 **RICS** | Regulated
Estate Agent
and Letting Agent

[dexters.co.uk](https://www.dexters.co.uk)