



Elgin Avenue, W9

£519 Per week

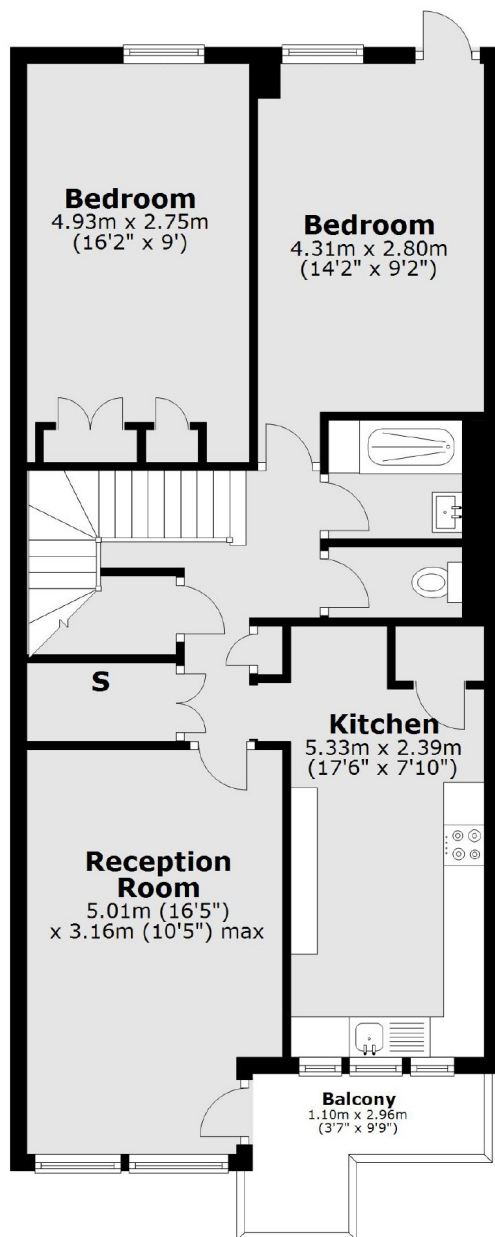
Split-level two bedroom flat in a purposed built development on Elgin Avenue. The flat is well proportioned with a large reception rooms, two good sized double bedrooms, a modern kitchen, bathroom suite and private balcony.

A residential close within half a mile of multiple transport links and amenities including Harrow Road, Maida Vale, Westbourne Park and Paddington Rec.

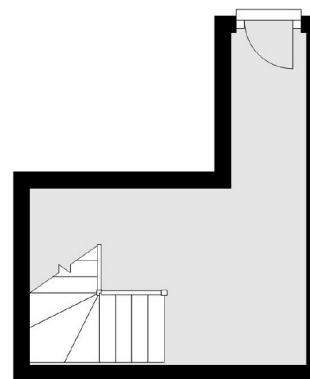
Features

- Two Bedrooms
- Newly Decorated
- Private Balcony
- Separate kitchen
- Split level
- Lift

Elgin Avenue, Maida Vale, W9



First Floor



Second Floor

Total area: approx. 81.9 sq. metres (881.4 sq. feet)