



Maida Vale, W9

£350,000

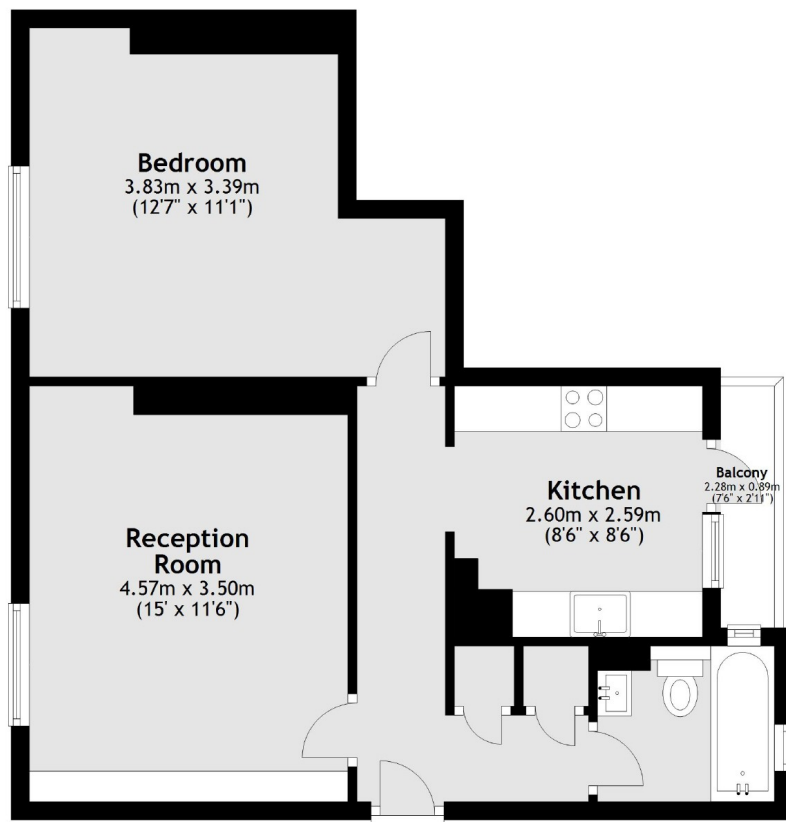
A top floor flat set in this popular purpose-built block in Maida Vale. The flat features a double bedroom, large living room, tiled bathroom and a separate kitchen with a balcony.

Dibdin House is situated on Maida Vale within half a mile of Maida Vale underground station (Bakerloo line) and Kilburn Park underground and overground stations. Paddington Recreation Ground is also within walking distance, as well as a multitude of amenities on the high street.

Features

- One Double Bedroom
- Top Floor Flat
- Balcony
- Wood Floors
- Chain Free
- Great Location

Maida Vale, Maida Vale, W9



Main area: Approx. 50.6 sq. metres (544.5 sq. feet)
Plus balconies, approx. 1.9 sq. metres (20.5 sq. feet)

Dexters

Maida Vale
298 Elgin Avenue
London
W9 1JS
Sales
020 7266 2020

Energy Rating: E. We aim to make our particulars both accurate and reliable. However they are not guaranteed; nor do they form part of an offer or contract. If you require clarification on any points then please contact us, especially if you're traveling some distance to view. Please note that appliances and heating systems have not been tested and therefore no warranties can be given as to their good working order.

 **RICS** | Regulated
Estate Agent
and Letting Agent

[dexters.co.uk](https://www.dexters.co.uk)