



## Harrow Road, W9

### £650,000

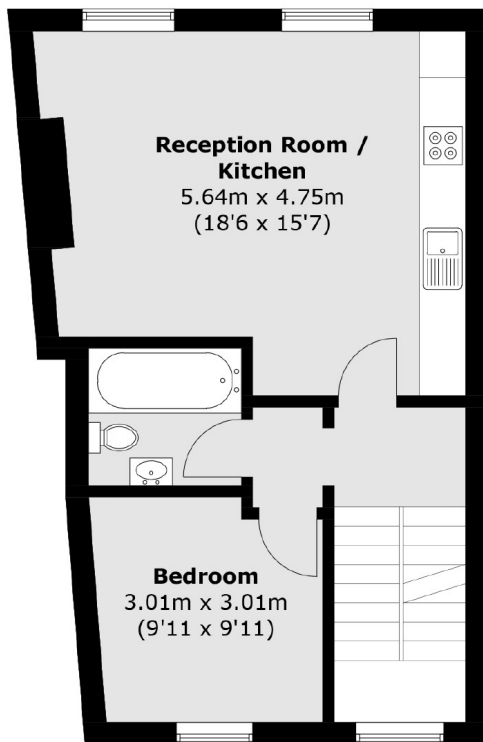
Arranged over two floors, a third and fourth floor split-level property set in a terraced corner period building. This flat comes complete with three double bedrooms, an open plan kitchen/reception and two bathrooms.

Harrow Road is conveniently located for easy access to a multitude of amenities, including restaurants, shops and Westbourne Green Open Space. The property is within walking distance of an abundance of transport links, including Warwick Avenue underground station (Bakerloo line)

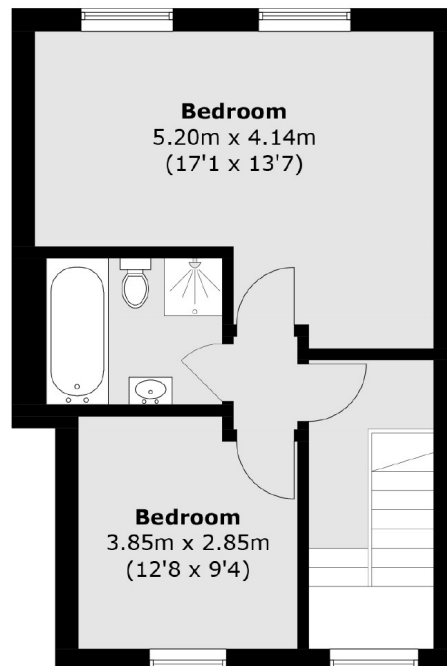
### Features

- Split-Level Property
- Three Double Bedrooms
- Two Bathrooms
- Good Condition
- Great Location
- Double-Glazed Windows

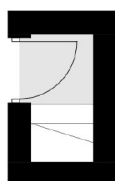
# Harrow Road, Maida Vale, W9



**Third Floor**



**Fourth Floor**



**Second Floor**

Total area (approx.): 87.3 sq. m (939.6 sq. ft)