



## Bravington Road, W9

### £550,000

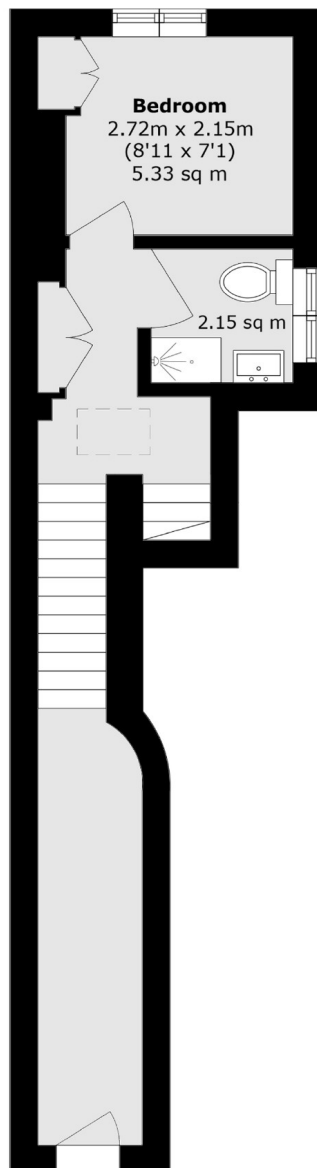
A well-presented maisonette set in a Victorian conversion. Arranged over two floors, this property is comprised of two bedrooms with built-in storage, an open plan kitchen/reception and wooden flooring throughout.

Bravington Road is a residential street with convenient access to Queen's Park or Westbourne Park, as well as several transport links to Central London. The property is located with within a mile of Little Venice, Portobello and Paddington Recreation Grounds.

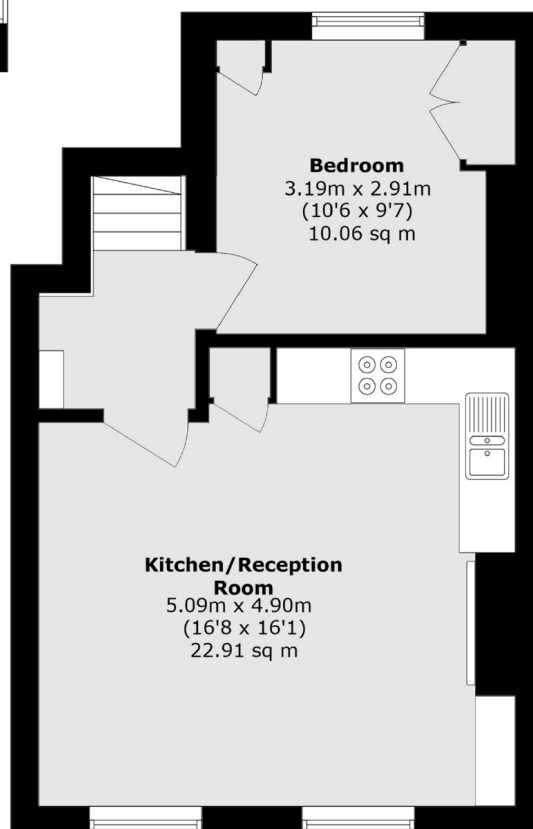
### Features

- Maisonette
- Two Bedrooms
- Open Plan Kitchen/Reception
- Wooden Flooring Throughout
- Great Location
- Share of Freehold

# Bravington Road, Maida Vale, W9



**Ground Floor**



**First Floor**

Total area (approx.): 57.4 sq. m (623.2 sq. ft)