

## Amberley Road, W9

### £400,000

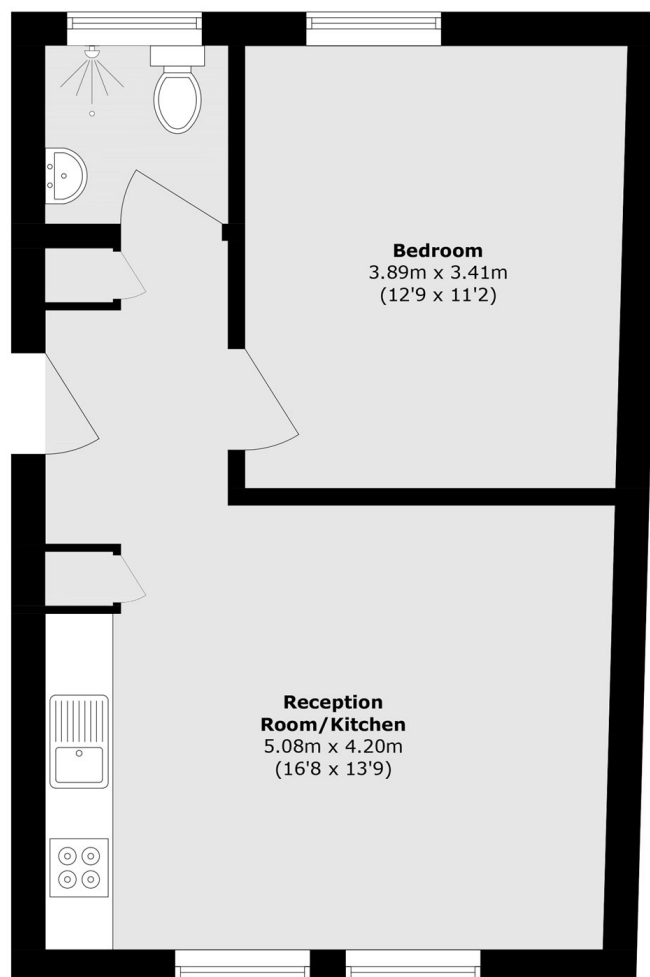
A recently refurbished second floor flat set in a charming Victorian conversion. This property comes complete with a sizable double bedroom, open plan kitchen/reception, modern bathroom with shower and sash windows throughout.

Amberley Road offers fantastic access to Warwick Avenue and Royal Oak as well as the local shops and cafés of Little Venice and Clifton Gardens.

### Features

- Top Floor Flat
- Recently Refurbished
- One Double Bedroom
- Open Plan Kitchen/Reception
- Chain Free
- Great Location

# Amberley Road, Maida Vale, W9



Total area (approx.): 42.8 sq. m (460.6 sq. ft)